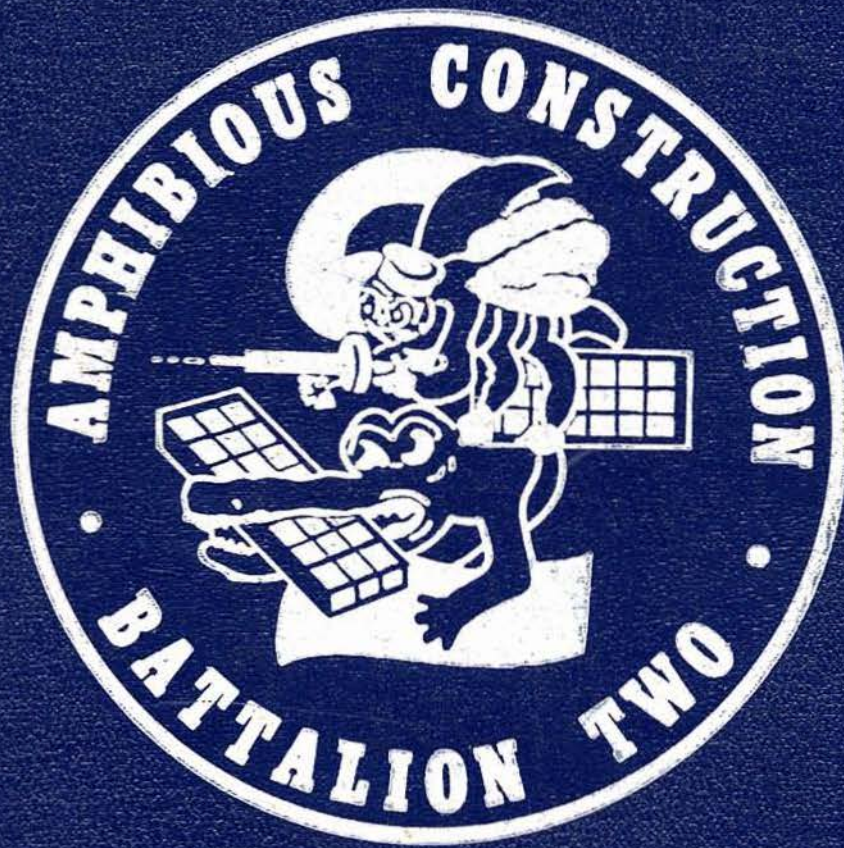
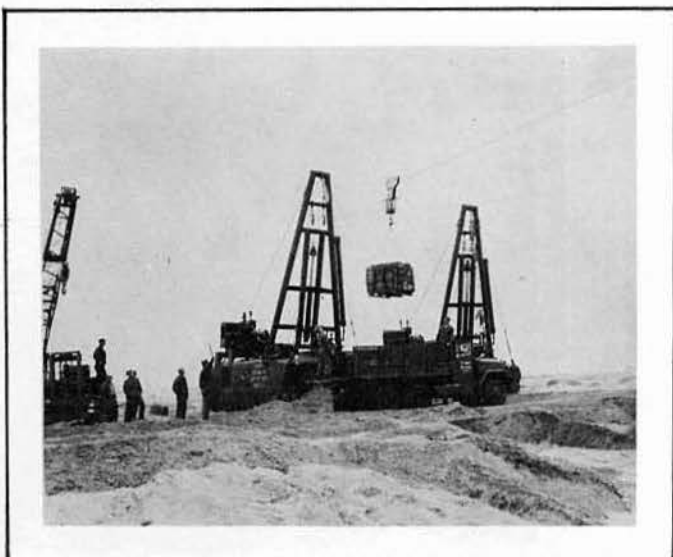
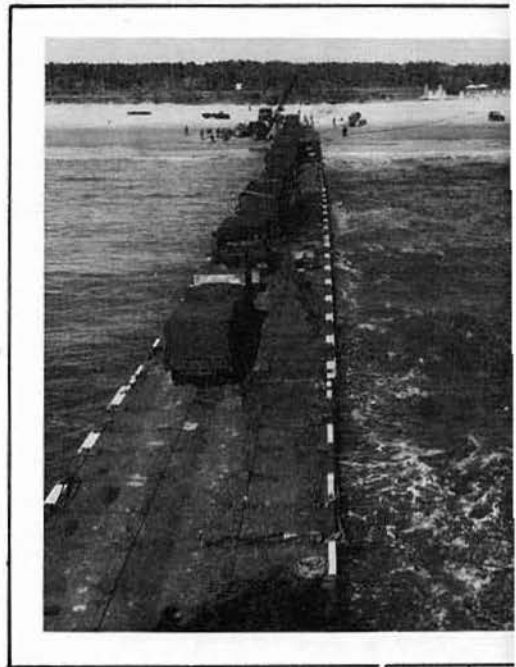


CREW'S BOOK



1960 - 1961



**AMPHIBIOUS
BATTAL
1960**



NAME

RATE/RANK

COMPANY

**CONSTRUCTION
ON TWO
1961**

FROM: THE OLD MAN

TO: ALL HANDS

IT HAS BEEN MY ESTEEMED PLEASURE TO HAVE SERVED AS YOUR COMMANDING OFFICER FOR THE PAST TWO YEARS. MANY TIMES YOU HAVE BEEN CALLED UPON FOR PERFORMANCE OF ASSIGNMENTS OVER AND BEYOND THE CALL OF DUTY AND YOU HAVE RESPONDED WITH OUTSTANDING RESULTS. I AM SINCERELY GRATEFUL TO YOU FOR EVERYTHING THAT YOU HAVE DONE FOR ME PERSONALLY, MY FAMILY AND THE BATTALION. YOUR ATTITUDES SHALL BE LONG REMEMBERED BY ME WHILE SERVING WITH YOU IN SUCH OPERATIONS AS ONSLOW, BOATS-OFF, HAITI, AND RAMEY, AND ESPECIALLY THE MANNER IN WHICH OUR FLEET "SEA-BEES" DEMONSTRATED THEIR WILL-DO, CAN-DO AND HAVE-DO SPIRIT.

IT IS A SOLEMN PROMISE THAT I WILL NEVER FORGET ANY OFFICER OR MAN OF AMPHIBIOUS CONSTRUCTION BATTALION TWO AND MAY YOU ALWAYS HAVE THE BEST OF LUCK IN THE FUTURE, A SMOOTH SURF AND HARD SAND BEACHES WHEREVER YOU ARE CALLED UPON TO DISPLAY OUR BATTALION CAPABILITIES.

C. F. KRICKENBURGER, JR.

ACB-2 WAS ACTIVATED 22 JANUARY 1947 AS THE 105TH NAVAL CONSTRUCTION BATTALION AND WAS PLACED UNDER THE OPERATIONAL CONTROL OF COMPHIBLANT AND UNDER ADMINISTRATIVE CONTROL OF COMPHIBTRALANT. IT ABSORBED THE DUTIES AND MATERIAL OF THE OLD PONTOON TRAINING UNIT OF COMPHIBTRALANT.

UPON THE ACTIVATION OF NAVAL BEACH GROUP TWO ON 19 JULY 1948, THE 105TH WAS DIRECTED BY COMPHIBLANT TO REPORT TO THE COMMANDER OF THAT ACTIVITY AS A COMMISSIONED UNIT THEREOF.

THE 105TH WAS REDESIGNATED ACB-2 BY THE CHIEF OF NAVAL OPERATIONS ON 31 OCTOBER 1950.

ACB-2 IS A COMMISSIONED UNIT OF THE ATLANTIC FLEET, AND IS A COMPLETELY EQUIPPED AND SELF SUSTAINING UNIT. THIS UNIT IS TACTICAL IN THE SENSE THAT IT IS ORGANIZED, TRAINED, AND EQUIPPED FOR MOVEMENT IN ITS ENTIRETY, OR IN ECHELONS TO ADVANCED POSITIONS AND IS PREPARED TO SUPPORT NAVAL FORCES AT THESE POSITIONS AS NECESSARY.

ACB-2 SERVES TWO MISSIONS: FIRST, AS AN AMPHIBIOUS CONSTRUCTION BATTALION, IT SUPPORTS NAVAL BEACH GROUP TWO IN A LANDING BY: INSTALLING AND MAINTAINING PONTOON CAUSEWAYS, PONTOON BARGE TRANSFER LINES AND PONTOON BARGE LITERAGE; ASSISTING IN ELIMINATION OF SHORELINE OBSTACLES; CONSTRUCTING LOADING SLOTS AND IMPROVING BEACHING CONDITIONS; ASSISTING IN BOAT GROUP SALVAGE, ESTABLISHING THE NAVAL BEACH GROUP BIVOUAC AREA AND CAMP, AND PROVIDING COMMISSARY AND MISSING FACILITIES FOR NAVAL BEACH GROUP TWO.

SECOND, AS THE ONLY AMPHIBIOUS CONSTRUCTION BATTALION OF THE BUREAU YARDS AND DOCKS ON THE EAST COAST IT: CONDUCTS RESEARCH AND DEVELOPMENT OF NEW PONTOON EQUIPMENT AND OPERATING TECHNIQUES; CONDUCTS SPECIAL CONSTRUCTION TRAINING PROJECTS AND ADVANCE BASE OPERATIONS WITH THE PERSONNEL TO BUILD A NUCLEUS OF EXPERIENCED SEABEES WHICH CAN BE READILY ASSEMBLED INTO SEVERAL CONSTRUCTION BATTALIONS IN TIME OF EMERGENCY; CONDUCTS PONTOON TRAINING FOR NAVY, ARMY, MARINE PERSONNEL HERE AT LITTLE CREEK.



DONALD A. PATRICK
COMMANDER, CIVIL ENGINEER CORPS
UNITED STATES NAVY

COMMANDER DONALD A. PATRICK IS A NATIVE OF MARLETTE, MICHIGAN. HE ATTENDED THE UNIVERSITY OF MICHIGAN, GRADUATING IN NOVEMBER 1944 WITH A BSCE. IN 1951 HE EARNED HIS MSCE FROM THE UNIVERSITY OF CALIFORNIA.

COMMANDER PATRICK WAS COMMISSIONED AN ENSIGN IN THE CIVIL ENGINEER CORPS OF THE U.S. NAVAL RESERVE IN 1945 AND ENTERED THE REGULAR NAVY IN 1948.

DURING COMMANDER PATRICK'S CAREER HE HAS SERVED WITH THE 302ND NAVAL CONSTRUCTION BATTALION, WEST-PAC; 5TH NAVAL CONSTRUCTION BRIGADE, GUAM; PONTON TRAINING UNIT, CORONADO; 104TH NAVAL CONSTRUCTION BATTALION, CORONADO; 11TH NAVAL DISTRICT PUBLIC WORKS OFFICE, SAN DIEGO; U.S. MARINE CORPS BASE, OCEANSIDE, CALIFORNIA; LST 857; UNIVERSITY OF CALIFORNIA, BERKELEY, CALIFORNIA; NAVAL SUPPLY DEPOT, MECHANICSBURG, PENNSYLVANIA; BUREAU OF YARDS AND DOCKS, WASHINGTON, D.C., NAVAL AIR STATION, AGANA, GUAM; AND OFFICER IN CHARGE OF CONSTRUCTION, FAR EAST AT YOKOSUKA, JAPAN

COMMANDER PATRICK IS ENTITLED TO WEAR THE AMERICAN CAMPAIGN MEDAL; ASIATIC - PACIFIC CAMPAIGN MEDAL; WORLD WAR II VICTORY MEDAL; NAVAL OCCUPATION MEDAL WITH ASIA CLASP; NATIONAL DEFENSE SERVICE MEDAL; AND THE NAVY EXPERT PISTOL SHOT MEDAL.

COMMANDING OFFICER

COMMANDER CUSTER F. KRICKENBERGER, JR., A NATIVE OF LIMA, OHIO, WAS COMMISSIONED AN ENSIGN IN THE U.S. NAVAL RESERVE IN 1944. HE TRANSFERRED TO THE REGULAR NAVY IN 1946 AS A LIEUTENANT (JUNIOR GRADE) IN THE CIVIL ENGINEER CORPS.

DURING COMMANDER KRICKENBERGER'S CAREER HE HAS SERVED WITH THE MOBILE EXPLOSIVE INVESTIGATION UNIT 4, PACIFIC AREA, NAVAL AMMUNITION DEPOT, McALESTER, OKLAHOMA, PETROLEUM RESERVE 4, FAIRBANKS, ALASKA; NAVAL CONSTRUCTION BATTALION CENTER, PORT HUENEME, CALIFORNIA; UNIVERSITY OF ILLINOIS, AND WITH THE ATOMIC DEFENSE SUPPORT AGENCY, WASHINGTON, D.C. HE ASSUMED COMMAND OF AMPHIBIOUS CONSTRUCTION BATTALION TWO ON 4 SEPTEMBER 1959.

HE WAS GRADUATED FROM CASE INSTITUTE OF TECHNOLOGY WITH A BSCE. IN 1956 HE EARNED HIS MSCE FROM THE UNIVERSITY OF ILLINOIS.

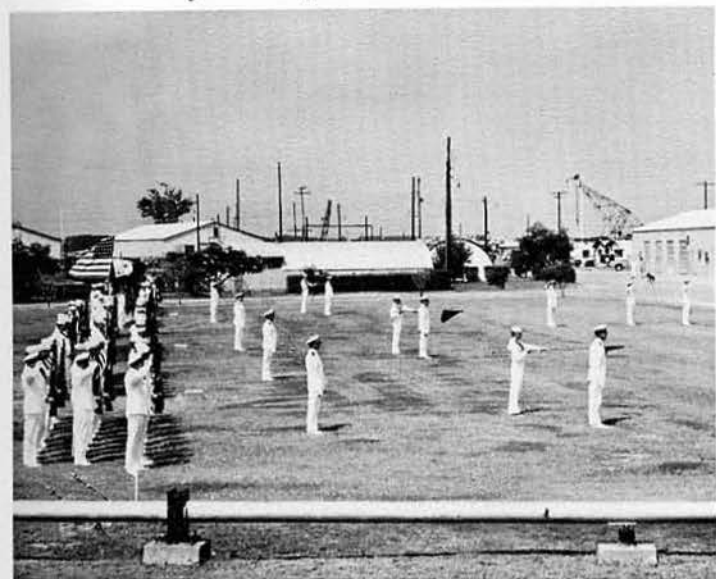
COMMANDER KRICKENBERGER IS ENTITLED TO WEAR THE NAVY UNIT COMMENDATION MEDAL, NAVY OCCUPATION MEDAL WITH ASIA CLASP; NATIONAL DEFENSE SERVICE MEDAL, AMERICAN CAMPAIGN MEDAL, ASIATIC-PACIFIC CAMPAIGN MEDAL; AND THE WORLD WAR II VICTORY MEDAL.



CUSTER F. KRICKENBERGER, JR.
COMMANDER, CIVIL ENGINEER CORPS
UNITED STATES NAVY

CHANGE OF COMMAND

ON 18 AUGUST 1961, COMMANDER CUSTER F. KRICKENBERGER, JR., CIVIL ENGINEER CORPS, U.S. NAVY, RELINQUISHED HIS COMMAND OF AMPHIBIOUS CONSTRUCTION BATTALION TWO TO COMMANDER DONALD A. PATRICK, CIVIL ENGINEER CORPS, U.S. NAVY. THIS FORMAL CEREMONY WAS CONDUCTED ON THE PHIBCB TWO PARADE GROUNDS. AFTER THE "OLD" AND "NEW" SKIPPERS READ THEIR ORDERS, COMMANDER AMPHIBIOUS FORCE, U.S. ATLANTIC FLEET - VICE ADMIRAL JOHN MCN. TAYLOR, U.S. NAVY EXPRESSED HIS APPRECIATION FOR A JOB "WELL DONE" TO COMMANDER KRICKENBERGER, AND WELCOMED COMMANDER PATRICK TO THE AMPHIBIOUS FORCE, U.S. ATLANTIC FLEET. AFTER THE CHANGE OF COMMAND CEREMONIES AND THE PASSING IN REVIEW BY BATTALION PERSONNEL, THE TWO "SKIPPERS", THE BATTALION OFFICERS AND DISTINGUISHED GUESTS ATTENDED A RECEPTION HELD IN THE "LITTLE PETTY OFFICER ACADEMY" CLASSROOM. ALL IN ALL IT WAS CONSIDERED A BRIGHT RED LETTER DAY ON THE SOCIAL CALENDAR AT PHIBCB TWO.



BATTALION STAFF OFFICERS



LT D.A. JOHNSON
OPERATIONS OFFICER



LT. J. G. FARRELL
SUPPLY OFFICER



LCDR R. BIRD
EXECUTIVE OFFICER



LT (JG) G. E. B. MORREN, JR.
TRAINING OFFICER



CWO E.E. MC NIFF
PLANS

HEADQUARTERS COMPANY



LT (JG) P. E. KAUFFMAN
COMPANY COMMANDER

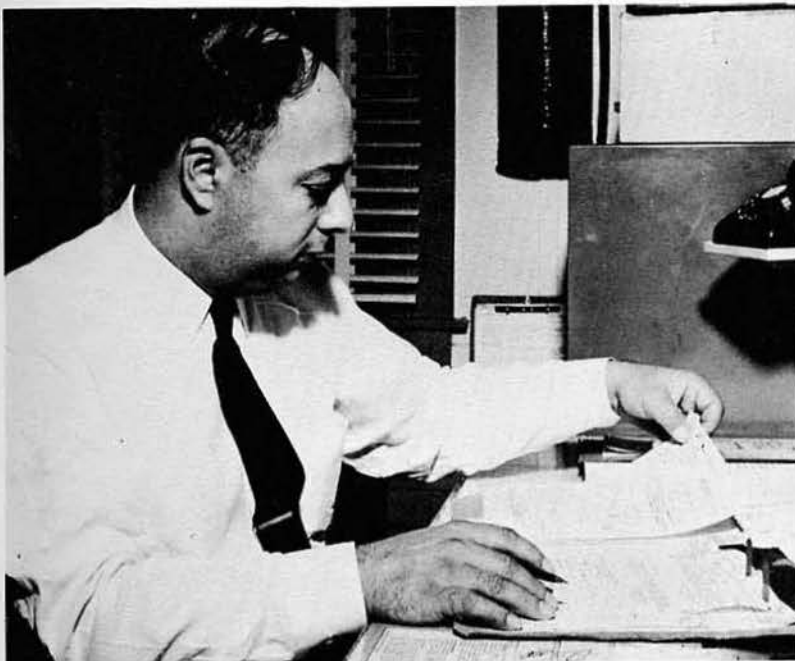


CHIEF G. W. ANDERSON
COMPANY ADJUTANT

THE HEADQUARTERS COMPANY PROVIDES THOSE ADMINISTRATIVE, PERSONNEL, SUPPLY, MEDICAL, AND ORDNANCE SERVICES NECESSARY TO SUPPORT THE OPERATION OF THE BATTALION. ALL ENLISTED PERSONNEL OF THE SUPPLY DEPARTMENT, THE OPERATIONS DEPARTMENT, AND THE EXECUTIVE DEPARTMENT ARE MEMBERS OF HEADQUARTERS COMPANY.



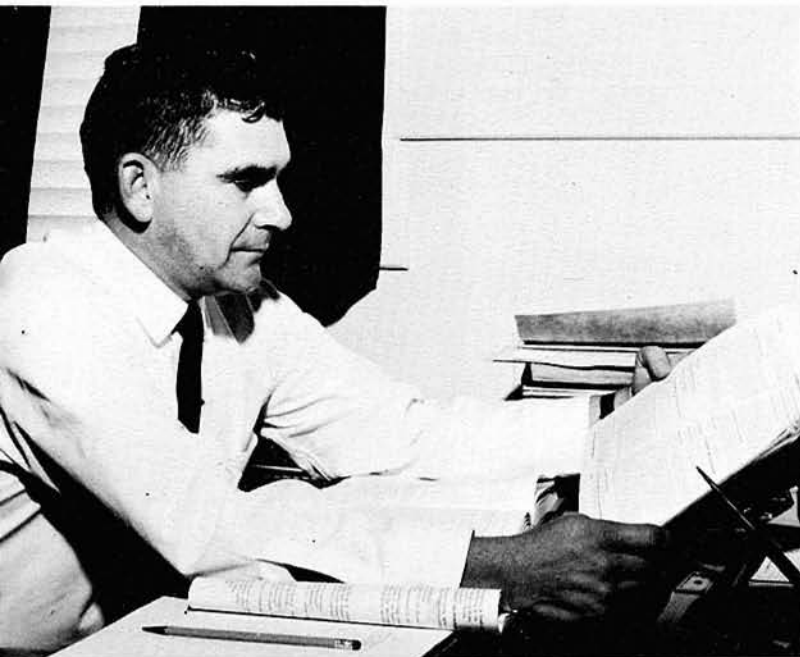
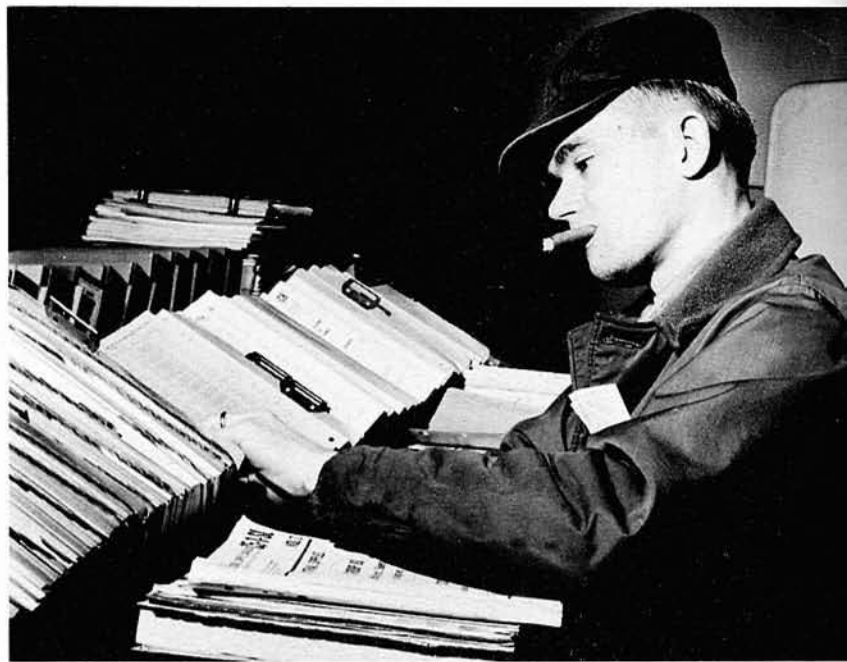
NOW HEAR THIS!



SICK BAY PILL SURGEON



I WONDER WHY THAT YNC WANTS
THREE NEW TYPEWRITERS?



"I DON'T SWEAT NO LITTLE CMAA TELLING ME TO SQUARE AWAY MY HAT!"

ALPHA COMPANY (EQUIPMENT)



LT (JG) K. O. PANKOW
COMPANY COMMANDER



CWO R. P. WITTENBERG
ASST. CO COMMANDER

ALPHA COMPANY PROVIDES THE GROUP VIII RATING PERSONNEL TO MAINTAIN, OPERATE, AND OVERHAUL ALL TRACKED AND WHEELED VEHICLES IN THE BATTALION. PERSONNEL IN THE EQUIPMENT COMPANY ARE ALSO RESPONSIBLE FOR MAINTAINING THE PHYSICAL PLANT EXISTING IN THE BATTALION AREA. OPERATIONALLY THE NUCLEUS OF THE SALVAGE TEAM IS PROVIDED FROM "A" COMPANY PERSONNEL AND EQUIPMENT. AFTER THE INITIAL LANDING PHASES OF AN OPERATION ARE ACCOMPLISHED THESE PERSONNEL CAN BE CALLED UPON TO CONDUCT LIMITED CONSTRUCTION ON THE BEACH. THIS IS UNUSUAL SEABEE DUTY FOR MOST OF THESE MEN AFTER SERVING AT ONE TIME OR ANOTHER WITH AN MCB.



CHIEF SOUTHARD
COMPANY ADJUTANT



"JUST A LITTLE MORE TO THE LEFT... AH, THAT'S FINE, MISS JONES!"



"THE NERVE... CASTRO WANTS SEEBEES ALONG WITH THE TRACTORS!"



"GEE, THAT HURT!"

CHARLIE COMPANY



LT C. B. UBER,
COMPANY COMMANDER



LT (JG) H. H. LEWIS



ENS R. B. LUNDBERG



CHIEF PERRY
COMPANY ADJUTANT



CWO W. P. BAREK

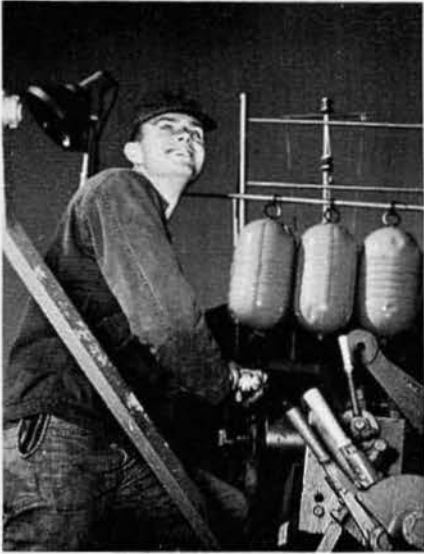


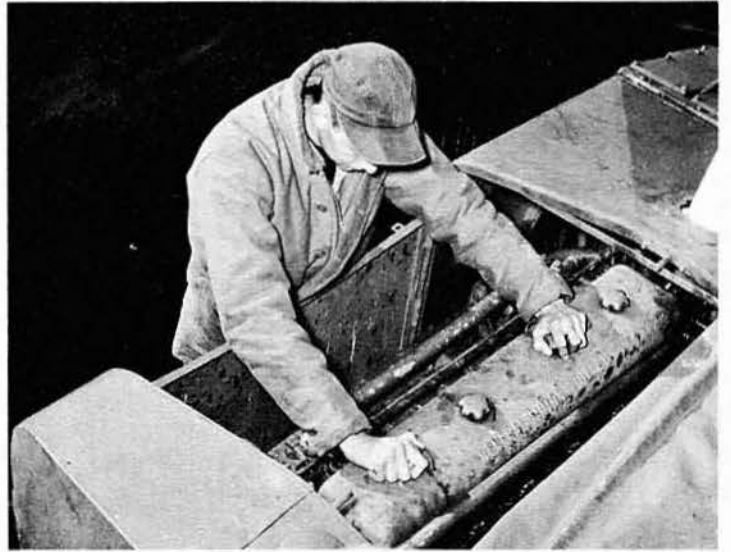
CWO F. M. MATSON

THE PONTOON COMPANY, CHARLIE COMPANY, ASSEMBLES, MAINTAINS AND OPERATES PONTOON CAUSEWAYS BARGES, WARPING TUGS AND FLOATING CRANES. THE GENERAL SERVICE PERSONNEL IN "C" COMPANY ALSO MAINTAIN AND OPERATE THE AMPHIBIOUS ASSAULT BULK FUEL SYSTEMS, THE CAUSEWAY TENDER BOATS AND MISCELLANEOUS CRAFT. IF A PERSON HAS JOINED THE NAVY TO SEE A LITTLE BIT OF THE WORLD, CHANCES ARE, HE'LL SEE IT IF HE IS A PART OF THE PONTOON COMPANY, BECAUSE THE MAJORITY OF THE DETACHMENTS ARE MANNED BY THESE HARD-WORKING FLEET SAILORS.



"NICE THROW, JONES... BUT NEXT TIME TRY HOLDING ONTO AN END!"





"DO YOU THINK THAT CASTRO WILL MISTAKE US SEABEES FOR MARINES?"



SEABEE
LEISURE
TIME
ACTIVITIES

SEA BEE QUEEN

1961 EDITION



MISS BETTY NESTER

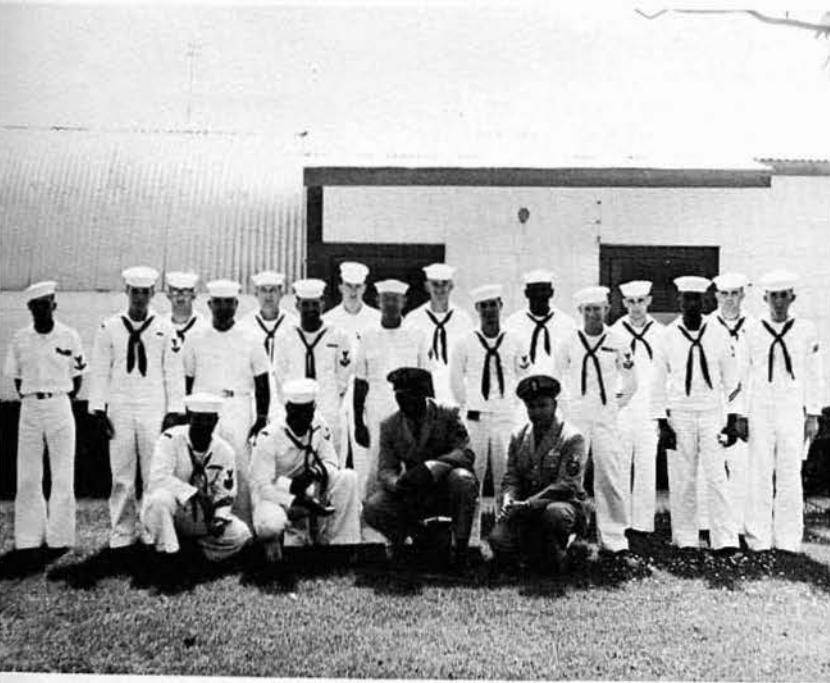


MISS BETTY NESTER, FLANKED BY HER ATTENDANTS, MISS SYLVIA BROWN (LEFT) AND HER SISTER GWENDOLYN NESTER ADMIRE AMPHIBIOUS CONSTRUCTION TWO'S BIRTHDAY CAKE. THE QUEEN WAS CROWNED AT THE SEABEE'S 19TH BIRTHDAY BALL RECENTLY. VICE ADMIRAL AND MRS. JOHN MCN. TAYLOR, COMMANDER AMPHIBIOUS FORCE, U. S. ATLANTIC FLEET, ATTENDED THE CEREMONY AND ADMIRAL TAYLOR CROWNED MISS NESTER AS QUEEN.



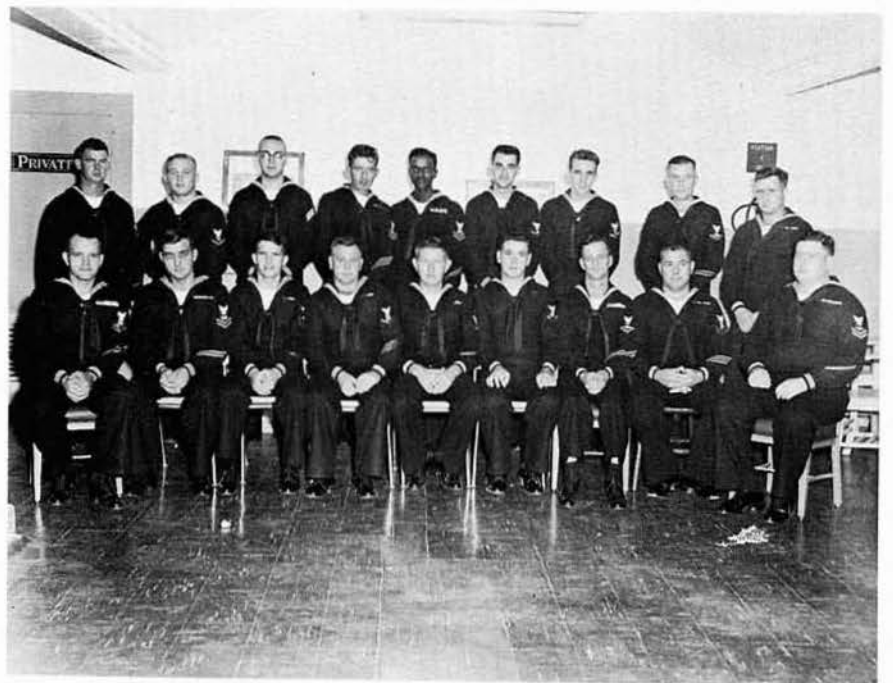
QUEEN BETTY

BATTALION'S LITTLE PETTY OFFICER ACADEMY

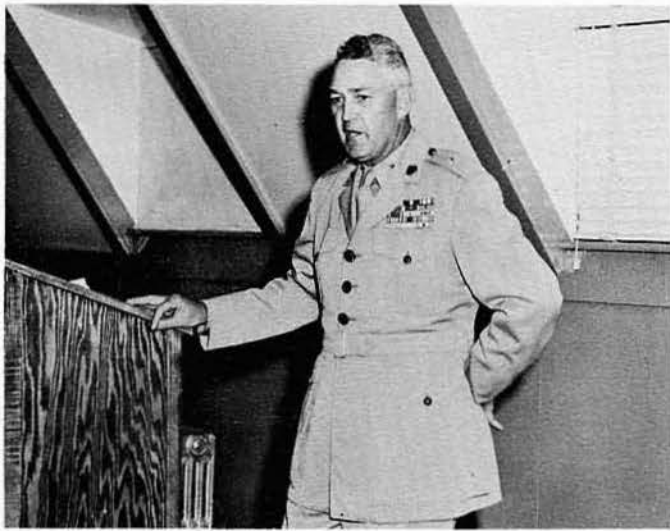


BACKGROUND. IN FURTHERANCE OF NAVY GENERAL ORDER 21, PHIBCB TWO ESTABLISHED A PETTY OFFICER LEADERSHIP ACADEMY IN 1960. IT IS THE OBJECTIVE OF THE ACADEMY TO COMPLEMENT THE COMMANDER AMPHIBIOUS FORCE, U.S. ATLANTIC FLEET PETTY OFFICER LEADERSHIP ACADEMY, BY OFFERING A COURSE OF INSTRUCTION TO JUNIOR PETTY OFFICERS, CHIEF PETTY OFFICERS AND FIRST CLASS PETTY OFFICERS WHO ARE GRADUATES OF THE PHIBLANT ACADEMY, SERVE AS INSTRUCTORS.

SINCE ITS FOUNDING IN FEBRUARY 1960 THE ACADEMY HAS HAD 270 GRADUATES.



THE GRADUATES



GEN. BRUNELLI PAYS A VISIT



HONOR GRADUATE KLECKNER



CONGRATULATIONS



YOU MADE IT THROUGH



RADM MACAIN ON SEAPOWER



THE BEST CB FOR 1961



BELLY-UP TIME

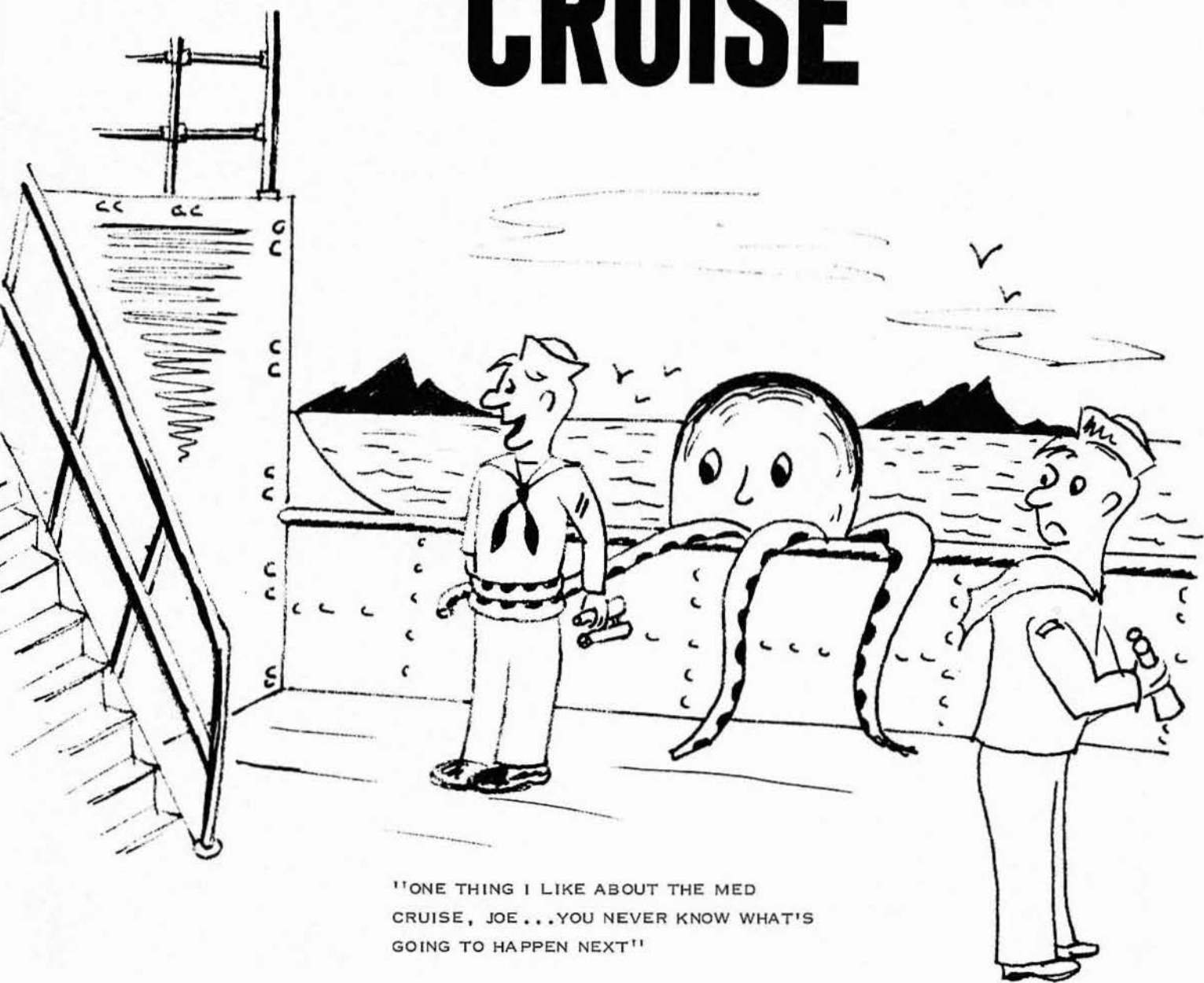


WAKE ME UP AT 1615



WHAT, ME WORRY?

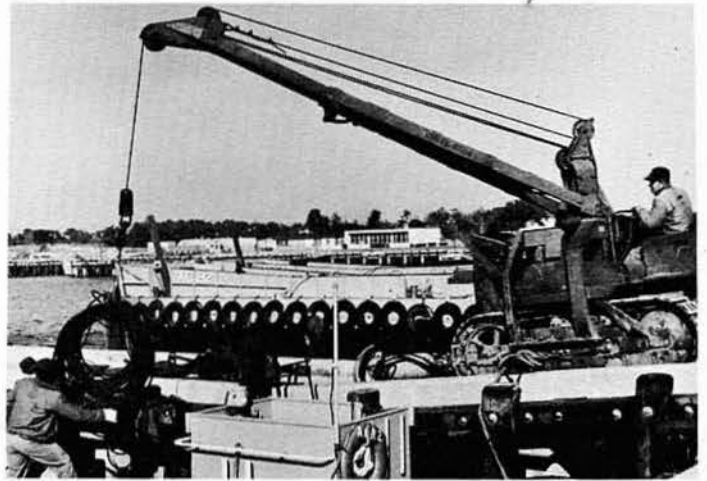
MED CRUISE



"ONE THING I LIKE ABOUT THE MED
CRUISE, JOE... YOU NEVER KNOW WHAT'S
GOING TO HAPPEN NEXT!"



UNDERWAY



CAN'T YOU COME DOWN A LITTLE CLOSER?



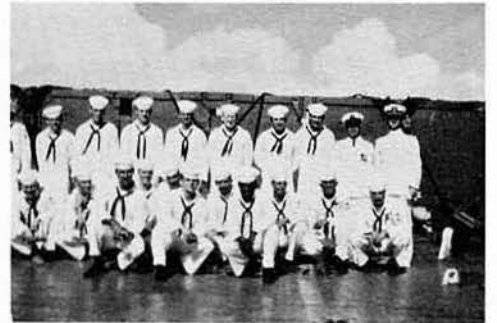
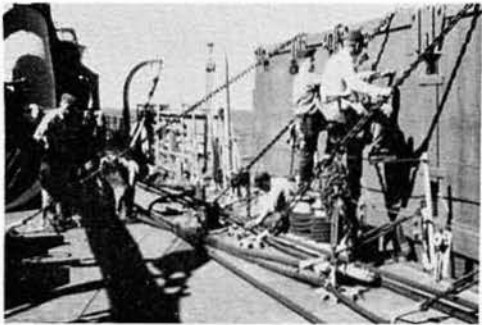
NELM 1-62 PREPARING TO LEAVE



HEAVE HO



EASY NOW





I'LL HAVE ONE OF THESE
AND TWO OF THOSE AND...

**NELM 3-60
DETACHMENT
BIRTHDAY PARTY
ATHENS, GREECE
14 MARCH, 1961**



"HONCHOS, ALL!"



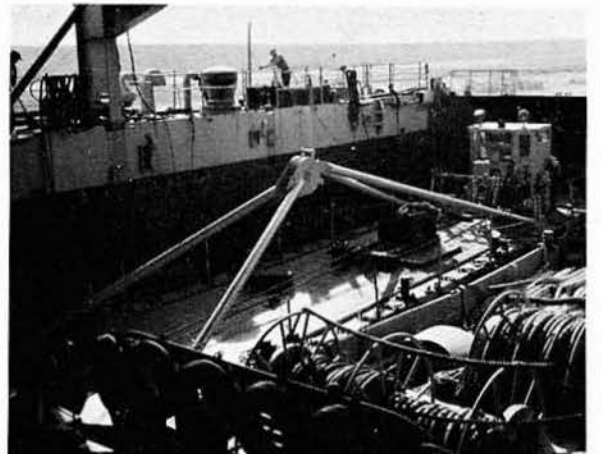
"WHAT DO YOU THINK OF GROUP VIII RATINGS?"



SURE, ITS A HAPPY BIRTHDAY



AND THERE WE WERE, WITH THE 'T'
MAKING HER APPROACH AT FLANK SPEED



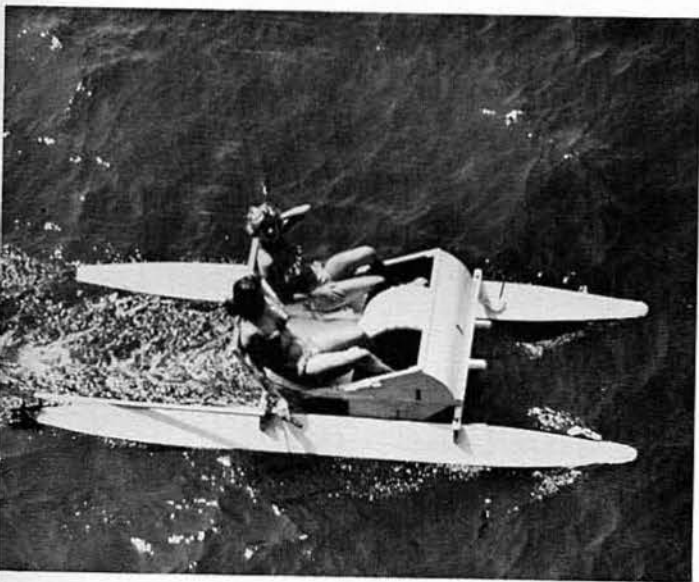
"CHEWING GUM'S FIRST HOME!"

NAVPLION, GREECE

THE SEA BEES FROM THE NELM 1-61 CAUSEWAY DETACHMENT VISITED A DAY SCHOOL OPERATED FOR THE CHILDREN OF THE POORER FAMILIES OF NAVPLION, GREECE. GENEROUS DONATIONS FROM THE TEAM BOUGHT A SLIDE PROJECTOR AND FILM FOR THE SCHOOL.

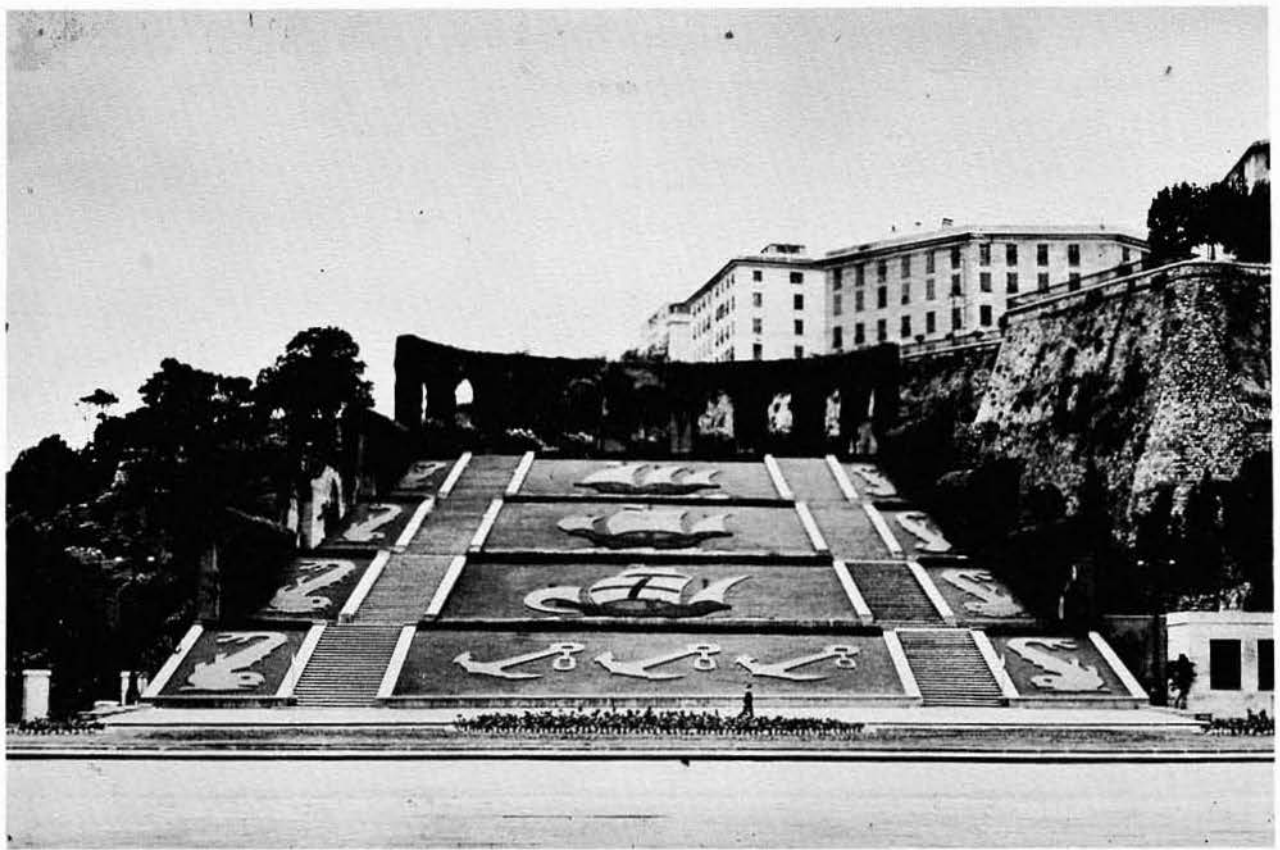


CANNES



ON TOUR





NELM 1-60 RETURNING FROM THE MED



KNOCK IT OFF, IT'S NOT REGULATION

MEET
THE CREW

AMPHIBIOUS CONSTRUCTION
BATTALION TWO

HEADQUARTERS COMPANY



G.W.ANDERSON, BMCA
J.(N)LABANCA, HMC



C.A.MCGATHEY, SKCM
F.M.SIRES, CSCA
W.A.TURNER, YNCA-P1
H.D.BINDLEY, YN3



W.H.BLACKWELL, CS3
R.J.BROWN, HM1
R.L.CAMPBELL, SN
L.L.FORTIN, SKSN



A.GLOVER, SD3
T.E.KIEFER, YN3
L.C.KRAWCZYK, PN3
A.G.LAYTART, GMG3



J.C.MABRY, YNSN
 R.S.MAIMONE, SN
 C.L.MCLIN, SK 1
 D.C.MILES, JR., SN



K.W.MOSELY, SN
 N.L.OCHS, PN3
 W.(N)QUIDGEON, SK3
 K.V.RAPP, CS2



M.L.ROSEBERRY, SN
 E.H.RYBIJ, SA
 F.D.SLIKER, CS3
 P.J.SMULSKI, YN3



T.L.STATES, SK2
 H.W.SWEEZEY, PN3
 A.G.SYRRAKOS, GMGSN
 R.J.WEATHERBY, YN2

ALPHA COMPANY



R.E. BAIRD, JR., EOC
J.R. CLEMONS, EOC



D.K. TRANUM, EOC
V.(N) TUOZZO, EOC
D.G. ATHMAN, BUL2
J.W. AULT, EON3



E.D. BAKER, CMA3
W.E. BAKER, DM1
R.A. BALSAMO, EONCN
C.H. BARNES, CMA3



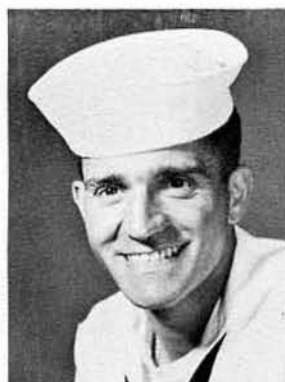
A.F. BARNETT, BUR2
L.D. BENNETT, CM1
M.M. BERMAN, CMA3
A.J. BOURQUE, CM1



A. D. CARNAHAN, EON3
 R. E. CAROTHERS, EO1
 A. Q. CARROLL, JR, BUL3
 M. R. CAYOU, CM1



K. L. CHAMBERLIN, CMA3
 G. M. CHRISTENSEN, CMH3
 J. T. CLEMENTS, CMA2
 R. V. COLEMAN, BU1



A. R. COTHAM, CEP2
 W. E. CUNNINGHAM, CMH2
 D. R. DAVIS, EONCN
 G. W. DAVIS, UTP3



J. T. DISCH, EO1
 W. V. DORCY, CMH2
 P. V. DOUGHTY, BUL2
 L. A. DRAKE, CP



R.M.EMMONS, CMA2
 R.A.ERICKSON, CN
 A.FALLAVOLLITA, CP
 R.G.FITZPATRICK,EOH3



C.FLAKE, JR., CN
 D.J.FLANNERY, CN
 M.J.FORD, EOH3
 D.A.FOSTER, BUR2



G.O.GANTT, CMA2
 W.A.GARBERS, EOH3
 D.D.GILBERTSON,EON2
 A.N.GLASS, EO1



W.T.GRAY, CM1
 C.D.HAILEY, UTP3
 D.(N)HALL, CM1
 R.HAMMEL, CMA3



W.D.HAMMOCK, SN
H.L.HARRIS, CMA3
S.C.HARTMAN, EON3
T.H.HENDRICKS, CP



C.R.HENSARLING, BUL3
J.J.HOFFER, EO1
L.J.HOUSELY, CN
W.B.ISHMUEL, EONCN



R.J.JIMMIZ, EON3
J.P.JORDAN, BUL3
J.T.JOZWIAK, EOH3
R.L.KINCAID, CN



R.W.KYLOR, CMACN
R.D.LANGLEY, CEN3
J.H.LUNEY, EON3
E.L.LUNKENHEIMER,
CMA3



L.J. MARLIER, CN
 J.R. MARTIN, CM1
 C. MAY, CP
 B.H. MCLURE, CMH3



J.S. MCGREW, CN
 M.M. MCVAY, CEP3
 C.H. MILBOURN, EON3
 M.F. MONTANARO, EO1



R.J. MORIN, EON2
 H.M. MUNGER, EON2
 E.W. OWENS, CN
 A.T. PALUSZYNSKI, MR1



R.E. PARRISH, CEW2
 E.L. PECK, CM1
 R.G. PILLAGE, CEW3
 C.W. RICHTER, EON3



J.J. RINGLEY, CN
 A.L. ROMES, CN
 W.H. ROWRK, CEW2
 T.A. SEILER, CMA2



R.C. SERMON, EON2
 J.H. SEXSON, EON2
 J.J. SHEA, ET2
 B.L. SHERIDAN, BUH3



C.R. SMITH, EOH3
 J.R. SMITH, EOH2
 R.D. SMITH, CN
 T.D. SMITH, CET2



J.T. STARKOWITZ, CN
 A.C. SUBER, CN
 B.F. SUTPHIN, EONCH
 R.E. TAYLOR, CMH2



R.G. TEW, BUR2
 J.C. TURNER, CMA3
 F.R. TYRON, CN
 W.J. UNDERWOOD, EON2



L.D. VANCE, CN
 C.G. VERBA, CE1
 J.N. WECKLER, DM3
 H.F. WHITE, EON2



F.S. WIDENHOUSE, CN
 C.W. WRIGHT, EON2
 E.F. WYNER, CMH3

CHARLIE COMPANY



M.H. DANIELS, BMCA
B.F. GHEESLING, ENCA



R.H. MAEDER, BMCA
P.D. PERRY, BMCA
J.(N) ANDERSON, SN
F.H. APPLETON, ENFN



H.E. BACHELLER, SN
C.A. BAILEY, EN2
P.J. BARON, SN
C.H. BAYLEY, BM1



J.R. BAYS, SN
M.H. BRITTS, BM3
J.A. BROWN, SN
R.W. BROWN, SN



E.K. BURKETT, EN1
 F.P. BUSHEY, EN1
 R.L. CAMBELL, SN
 L.E. CARR, EN2



C.E. CROWDER, BM3
 A.A. DANIELS, SN
 V.(N) DANZA, BM1
 R.E. DASILVA, EN3



J.(N) DEBOSE, BM3
 E.(N) DIXON, EN2
 W.R. DRAKE, SN
 H.E. EGLY, JR., SN



A.L. FLECHER, ENFN
 R.J. FOWLER, SN
 W.R. GARRETT, SN
 S.H. GROW, EN3



M.W.HALL, SN
 C.R.HALMAN, BM2
 F.L.HILL, BM2
 E.K.HUDDLESTON, BM2



K.D.HUNT, SN
 J.C.HYLANDER, EN2
 D.INNACI, FA
 W.L.JAMES, BM2



R.N.JAY, BM3
 M.P.JONES, BM2
 J.L.KELLY, FA
 J.F.KNIGHT, EN1



F.R.LAUX, EN3
 J.(N)LEVINE, BM3
 V.E.LEWEIN, EN1
 I.W.LIVINGSTON, BM2



J.R.MCCONKEY, SN
 J.A.MCKINLEY, SA
 E.(N)MILES, BM1
 P.E.MORTIMER, ENFA



D.G.MORTLAND, SN
 J.D.MULLENS, SWE3
 V.C.NICHOLSON, BM1
 I.REID, BM3



R.J.ROBINSON, BMSN
 R.E.SCHMIDLIN, BM3
 J.(N)SCHNEIDER, FN
 J.W.SCHOVILLE, ENFN



T.H.SCOLLEY, SN
 W.E.SIROIS, SN
 J.B.SMITH, BM2
 A.E.L.STAHLHUT,
 ENFN



J.R. SWINSON, BM1



M.G. WAYE, ENFN



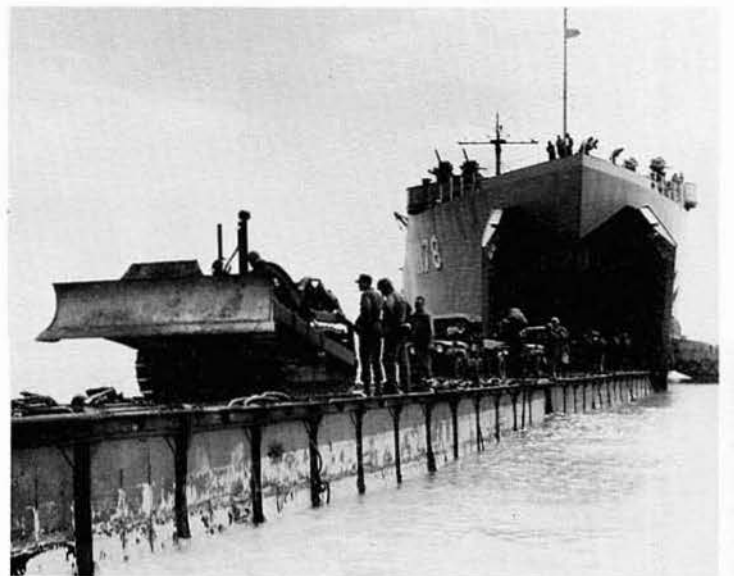
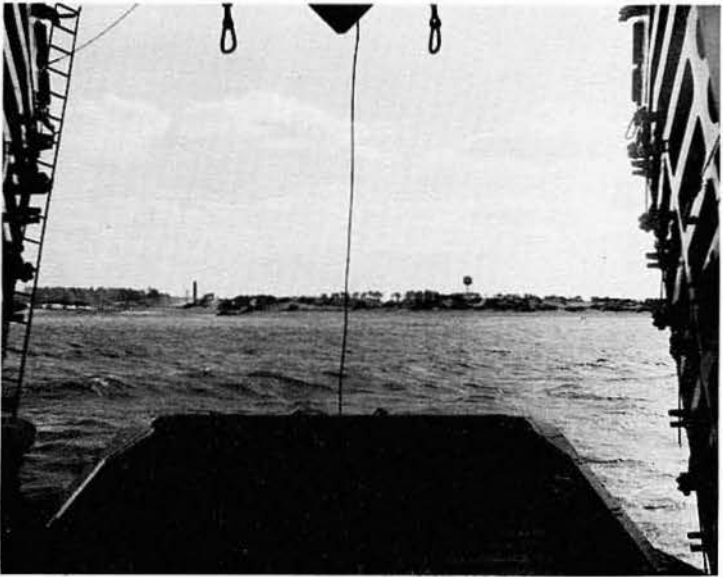
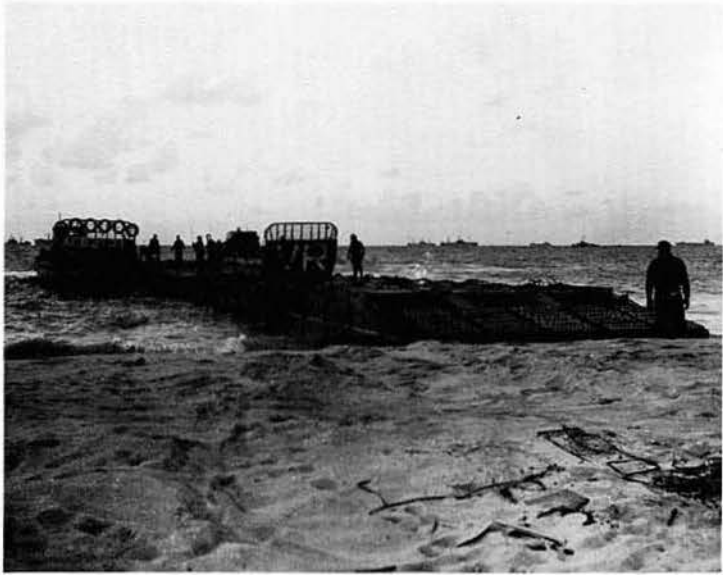
E.C. WESLEY, EN1

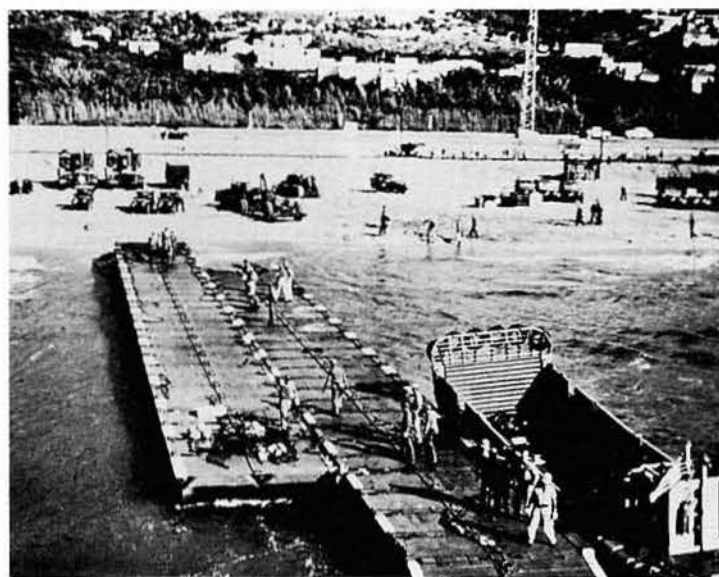
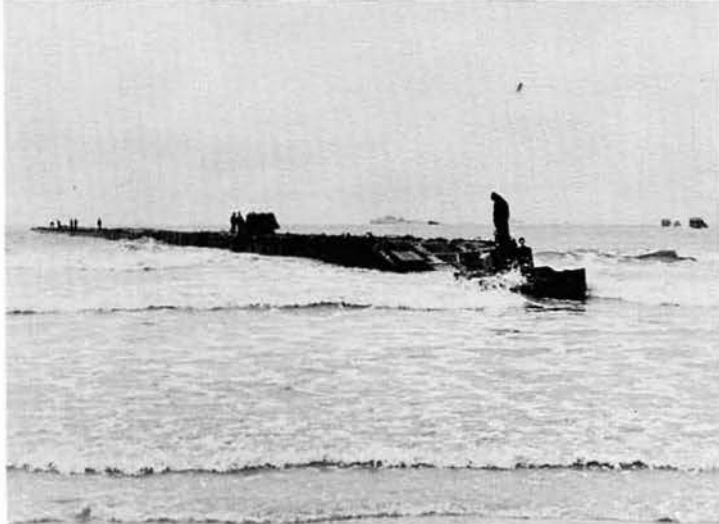
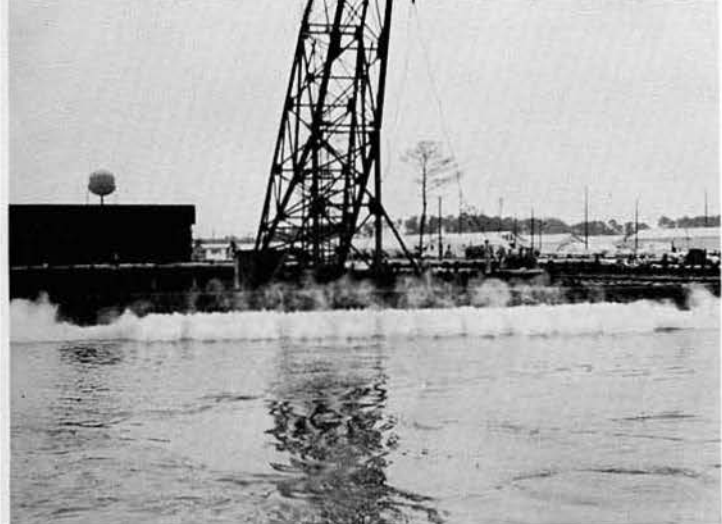


H.D. WHEAT, SN



P.A. WILLIAMS, SN







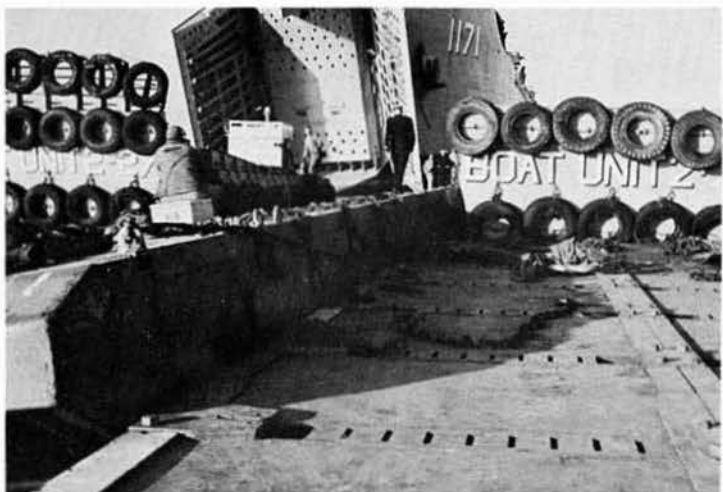
OUR PIPE LINE SYSTEM



"A SLIGHT MISS"



CO-ORDINATION



"A SLIGHT LIST"



TWO ACB2 TD-24 AND ONE USMC TD-18 BULL-
DOZERS FILLING IN A MOSQUITO INFESTED SWAMP
FOR THE PEOPLE OF NAVPLION, GREECE. NELM
3-60 DETACHMENT. 24 MARCH 1961.

HIGH WATER



REALLY SIMPLIFIES LINE HANDLING



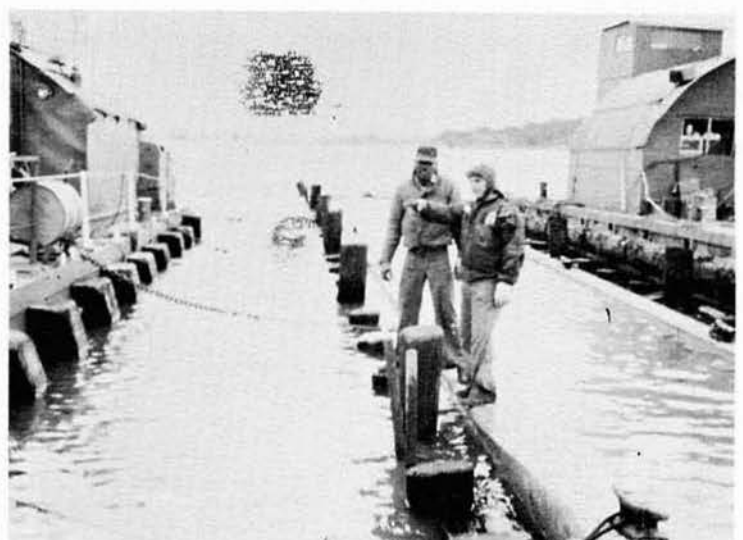
A BIT HIGH, ISN'T IT?



STEELWORKERS HELP SHIFT CAUSEWAYS



DON'T BE WORRIED, THIS HAPPENS ALL THE TIME



YES, DRY LAND USED TO BE OVER THAT WARPING TUG



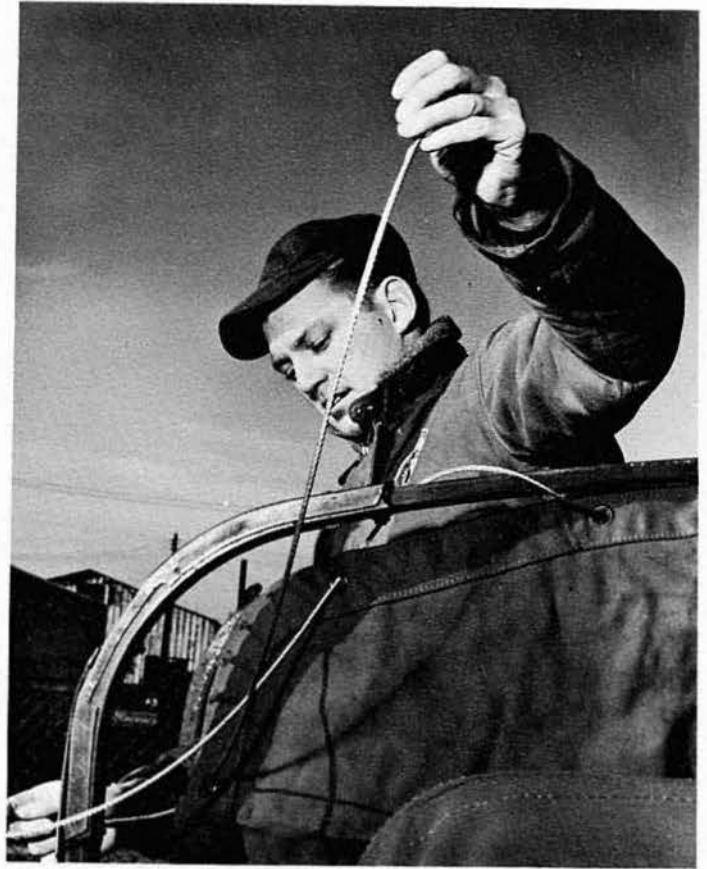
JUST A MINUTE



IF IT ONLY STAYS ON



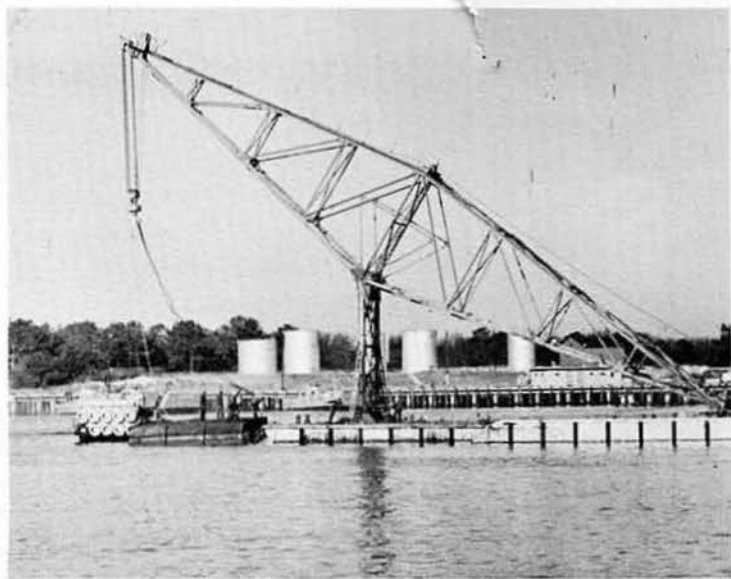
WILL IT LIVE?



JUST LET THEM TRY TO GET IN NOW!



ONLY "UMPTEN" MORE LENGTHS OF HOSE



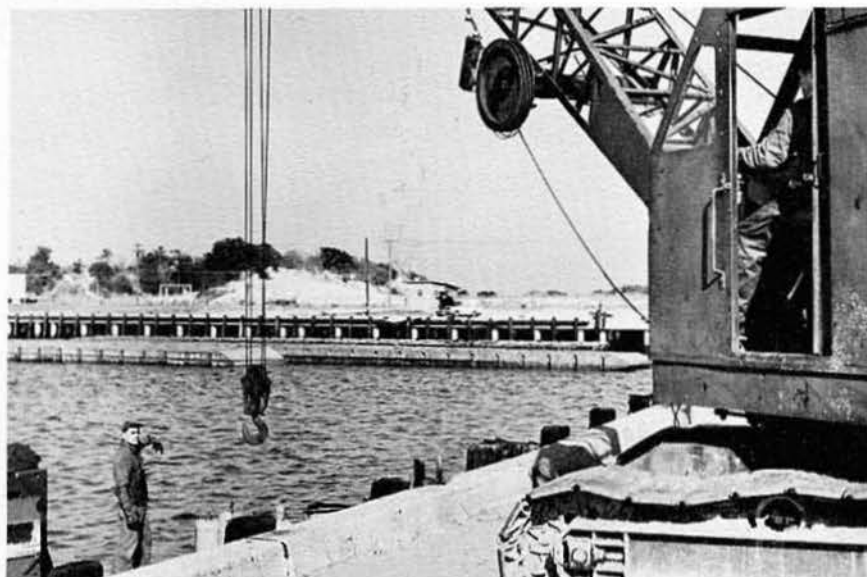
ONE OF OUR LARGER PIECES OF MACHINERY



SEE IF WE CAN'T BEND THE STIFF ARM



THIS LOOKS LIKE THE SPARE OFF MY CAR



'DOWN AND DOWN'



ARNOLD AND DURANICO HANG ON



TWO OUT OF SIX PERSONS WEAR ACME SUNGLASSES



STATIC DISPLAY, .BUT ACTUAL CONDITIONS



TIME OUT



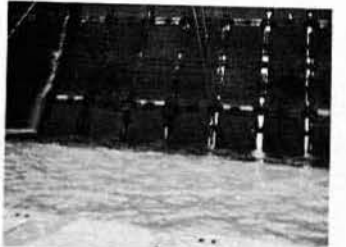
LOOK! EVERYONE'S IN STEP



LOOK WHAT WE FOUND



AIRY, ISN'T IT, CHIEF?



LOOKS LIKE WE'VE GOT A SLIGHT RENT IN A CAN



ELM 2-62 ROADY, CHIEF?



EVERYTHING'S UNDER CONTROL



THE SHERIFF AND LAYTART



"ALL SECURE"



"LET GO MY THUMB"



MR. WITTENBERG, THE LOWBOY'S BROKE



CHIEF SIRS AND THE REMINGTON RAIDERS



I WONDER WHAT HAPPENS IF I PUSH 'THIS LITTLE THING?



HOOK 'ER UP

