

WELCOME TO

July 1971



NMCB 133 Notice 1720

KAN GROO

Welcome Aboard:

"Welcome to NMCB 133--the "Kan Groo" Battalion. You are joining a truly outstanding battalion that has a long tradition of excellence.

"The reputation that this battalion enjoys is due to the hard work and dedication of our predecessors. For that reputation to endure it is essential that each man performs to the limit of his capabilities.

"Every man is placed in the organization in such a way that the battalion can benefit from his talents, and that he can develop technical skills and professional competence in his chosen field. The opportunity to advance is present for each of you, and you should take advantage of every such opportunity.

"Communications is essential to all functions. It is my policy that you be fully informed on all matters affecting you. Through the chain of command, company schedules, the Plan of the Day and personal contact you should know about all factors of training, inspection, deployment and other schedules. I trust that you will all communicate your thoughts, problems or suggestions to me. This can be through your company chain of command, the Senior Enlisted Advisor, or directly to me.

"I hope you will find your tour with NMCB 133 challenging and rewarding and you will always consider this to have been your finest tour.

Sincerely Yours,



William C. Connor
Commanding Officer

Commander William C. Connor is a 1957 graduate of Duke University where he earned a bachelor of science degree in electrical engineering. He attended the Navy Post Graduate School, Monterey, Calif., and received a master of science degree in engineering electronics in 1964.

He has served at the Marine Corps Air Station, Iwakuni, Japan; on the staff of the Officer-in-Charge of Construction, Republic of Vietnam; at the Southeast Division, Naval Facilities Engineering Command; at Headquarters, Naval Facilities Engineering Command and at the Naval Air Test Center, Patuxent River, Maryland.

Commander Connor reported to his present duty as Commanding Officer of NMCB 133 in early March 1971, following a tour of duty as Chief Staff Officer, 20th Naval Construction Regiment, Naval Construction Battalion Center, Gulfport, Mississippi.

Commander Connor holds the Meritorious Service Medal, Navy Commendation Medal, National Defense Service Medal, the Vietnam Service Medal and the Vietnam Campaign Medal. He is a member of Sigma Xi, the Society Of American Military Engineers, the National Society of Professional Engineers, a registered Professional Engineer in the State of California and a Boy Scout Leader.

He is married to the former Gayle M. Dobson of Mount Airy, N.C. The Connor's have two sons, Michael 11 and Stephen 9. Commander Connor is the son of Mrs. Dorothy C. Connor of Gastonia, N.C.



Commander W. C. Connor
Commanding Officer

A native of Los Angeles, Calif., he graduated from the University of Southern California with a degree in Architecture and City Planning. He was commissioned as an Ensign following Graduation from Officer Candidate School, Newport, R.I. in August 1959.

Prior to attending OCS, he was attached to Reserve Seabee Division 11-12, where he attained the rate of Builder Third Class.

Following OCS, he received training at the Civil Engineer Corps Officers School in Port Hueneme, Calif. His first assignment as a CEC Officer was in the Detail Office of the Bureau of Naval Personnel. He has also served as Assistant Resident Officer-in-Charge of Construction at the U.S. Naval Academy, Annapolis, Maryland; Assistant Public Works Officer, Marine Corps Air Station, Yuma, Ariz.; an assignment as Planning Officer for the U.S. Naval Station, Washington, D.C.; in Thailand as Assistant Officer-in-Charge of Construction, Sattahip; Deputy Resident Officer-in-Charge of Construction, Sattahip and Resident Officer-in-Charge of construction, Roads respectively.

Lieutenant Commander Truesdell reported to his present duty as Executive Officer of NMCB 133 in May 1970, following a tour of duty as Public Works Officer for the Construction Battalion Center, Gulfport, Mississippi.

Lieutenant Commander Truesdell is authorized to wear the Navy Commendation Medal with Gold Star, the Navy Unit Commendation for actions following Hurricane Camille, Meritorious Unit Commendation, National Defense Service Medal with star, Vietnam Campaign Medal with six stars, Vietnam Service Medal and Expert Rifle and Pistol Medals.

He is married to the former Lucille Brown of Annapolis, Maryland. Mrs Truesdell is active in



*Lcdr. Richard C. Truesdell
Executive Officer*

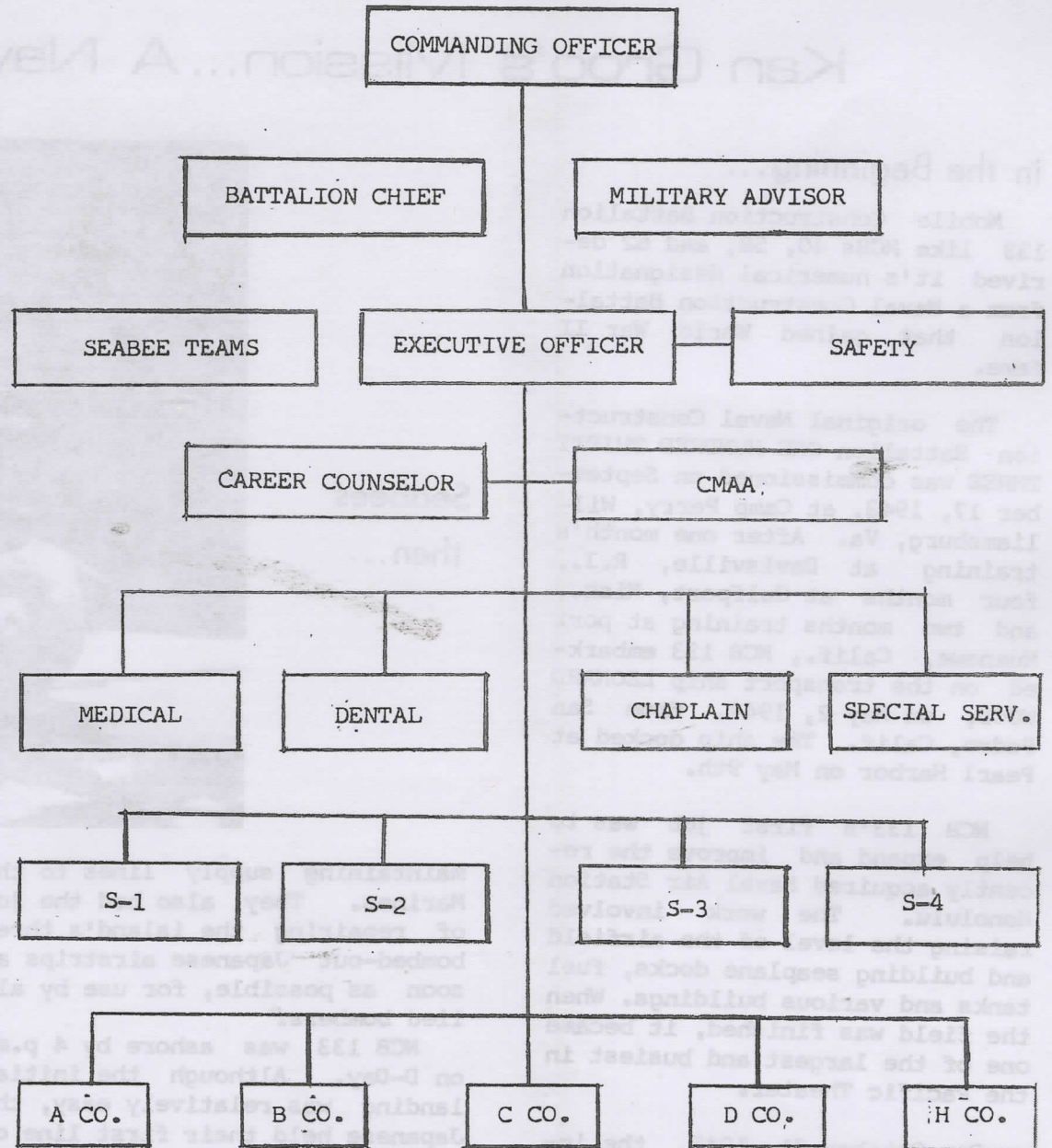
the Navy Relief Society and is currently president of the Officer Wives Club in Gulfport. They have two children, William and Steven and reside in Long Beach, Mississippi.



*CUCM J.P. Albert Goosens
Senior Enlisted Advisor*

Master Chief Constructionman J.P. Albert Goosens is the battalion's Senior Enlisted Advisor and a graduate of Builder "A" and "B" schools, a "C" school for Instructors and the Group VIII Advance Career Course.

Chief Goosens is currently serving onboard NMCB 133 for the second time during his more than 22 years of naval service.



Kan Groo's Mission... A Naval Tradition

in the Beginning...

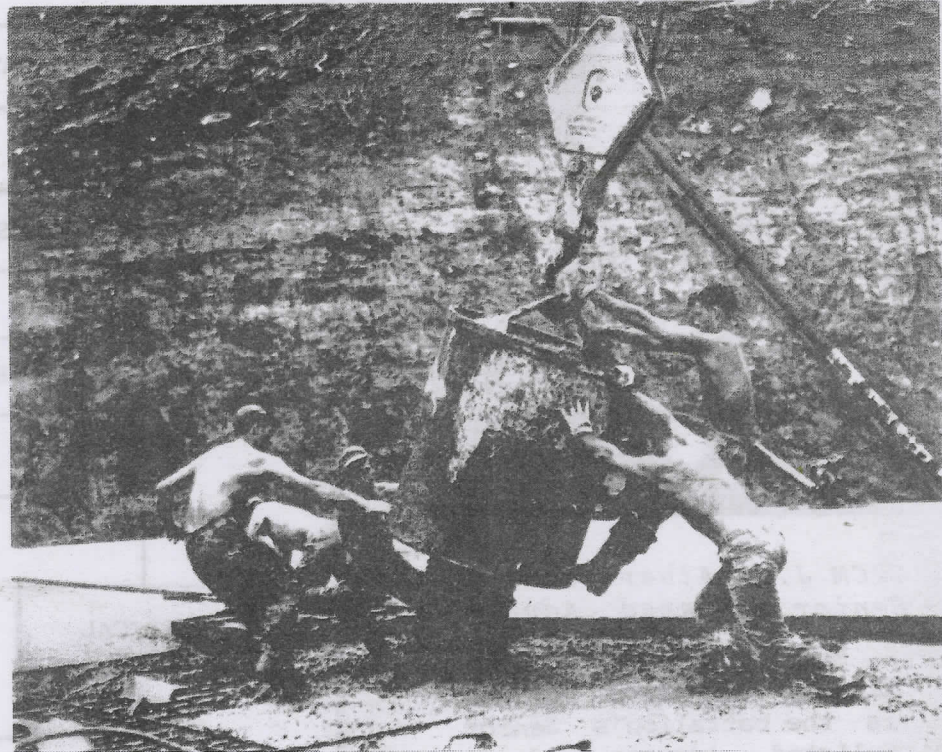
Mobile Construction Battalion 133 like MCBs 40, 58, and 62 derived its numerical designation from a Naval Construction Battalion that gained World War II fame.

The original Naval Construction Battalion ONE HUNDRED THIRTY THREE was commissioned on September 17, 1943, at Camp Perry, Williamsburg, Va. After one month's training at Davisville, R.I., four months at Gulfport, Miss., and two months training at Port Hueneme, Calif., NCB 133 embarked on the transport ship LEONARD WOOD, on May 2, 1944, from San Pedro, Calif. The ship docked at Pearl Harbor on May 9th.

NCB 133's first job was to help expand and improve the recently acquired Naval Air Station Honolulu. The work involved raising the level of the airfield and building seaplane docks, fuel tanks and various buildings. When the field was finished, it became one of the largest and busiest in the Pacific Theater.

On October 31, 1945, the invasion of Iwo Jima began. NCBs 31, 62 and 133 accompanied the invasion force. The Seabees were to act as shore parties,

Seabees
then...



maintaining supply lines to the Marines. They also had the job of repairing the island's three bombed-out Japanese airstrips as soon as possible, for use by allied bombers.

NCB 133 was ashore by 4 p.m. on D-Day. Although the initial landing was relatively easy, the Japanese held their first line of defense and delivered murderous fire from guns high on Mount Suribachi, and the entire beach was covered by mortar, artillery and

machine gun fire from the surrounding hills. The Seabees were in a position even more precarious than the Marines on the front lines, but they stayed where they were, took what the enemy threw at them and carried on the job of establishing and operating supply lines to the men doing the fighting.

Marines captured the first airstrip, the southern one, on D-Day plus seven, the runway had been repaired enough that it

could be used by light observation planes. On that day, the order came to expand the airstrip for use by bombers. Three days later the Seabees were ordered to begin rehabilitating the second airfield, which was to become the longest in the Western Pacific.

Work went on day and night on the two airstrips after the first two weeks. Until then, Japanese resistance had prevented the men from working after dark. The battalion encountered sniper fire and mortar attacks until and even after the island was declared secure on March 16th.

In over five months on Iwo Jima, the battalion had produced over 100,000 tons of crushed rock, - moved over a million cubic yards of earth, laid 5,900 feet of drain pipe, installed 4,000 feet of conduit and placed 725 cubic yards of concrete. The war drew to an end as the battalion finished its' work on Iwo Jima. NCB 133 was decommissioned in December, 1945. NCB 133 was presented the Navy Unit Commendation for its' part in the invasion of Iwo Jima.

then Resurrection...

U.S. Naval Mobile Construction Battalion ONE THIRTY THREE was recommissioned on August 12, 1966 in ceremonies aboard the Con-

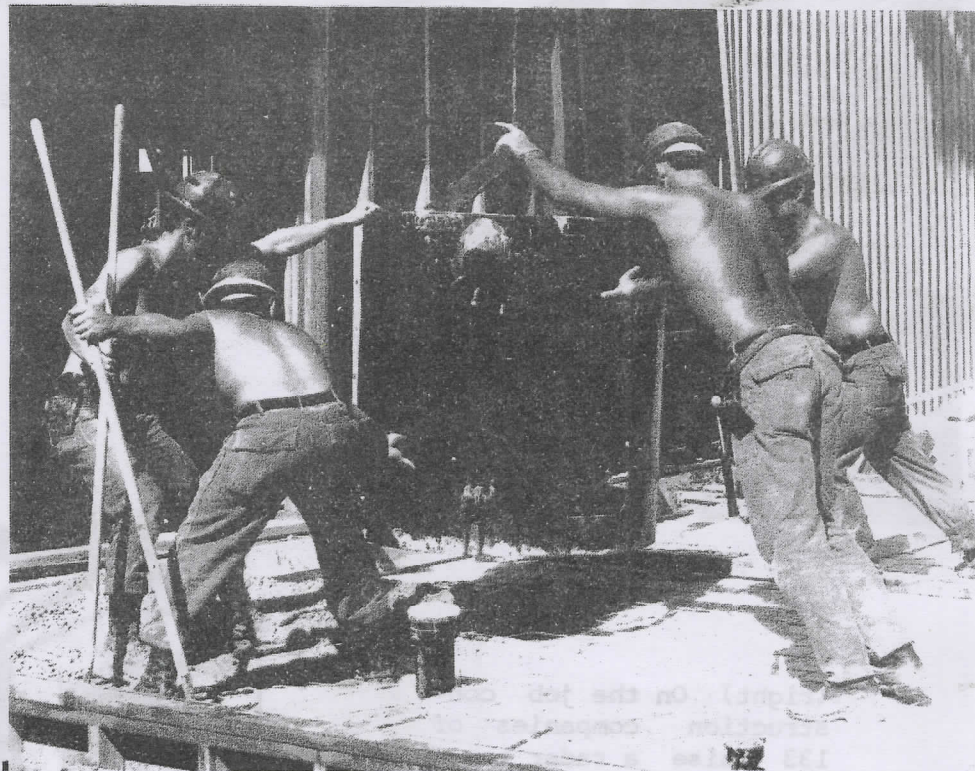
struction Battalion Center, Gulfport, Miss.

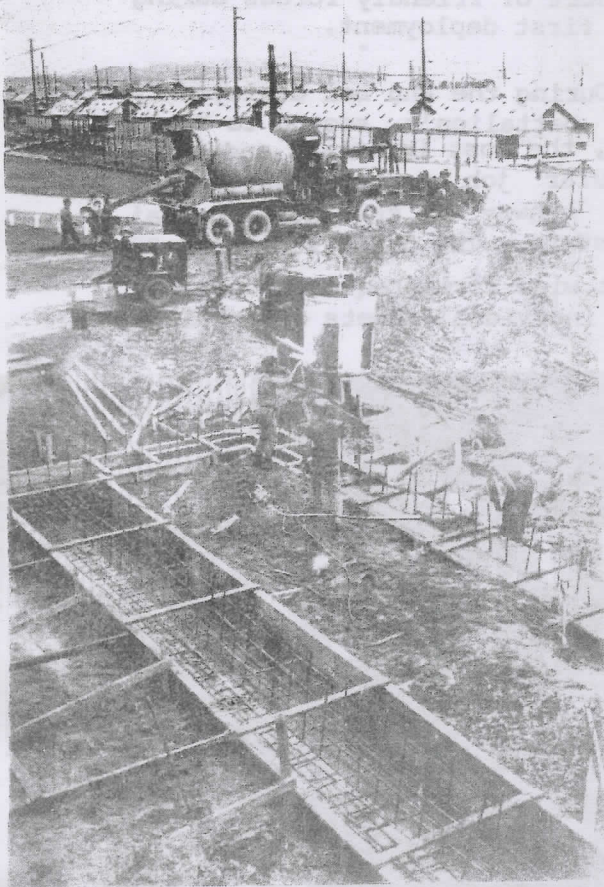
In February, 1967, the battalion deployed to Danang, Vietnam, marking its' first deployment since World War II. During its' first deployment, the battalion's projects ranged from construction of the second increment for a prisoner of war camp to a staging area at Observation Point for rock hauled to the Marble Mountain tank farm. While attached to the THIRTIETH

Naval Construction Regiment during its' second RVN deployment, in 1968, MCB 133 was awarded its' second Navy Unit Commendation for support of friendly forces during the first deployment.

During the Phu Bai deployment, the battalion's second to Vietnam, the most important and spectacular job was the overlay of the runway at the Hue-Phu Bai airstrip. The 5,600 foot long 72 foot wide strip required over 18,000 individual sheets of matting.

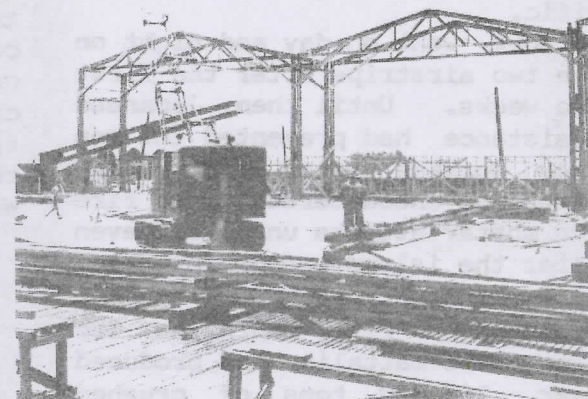
and
now...





in Vietnam...
 (right) Hangars are being built by the men of 133 at MAG 36, near Da Nang, Vietnam.

(left) Bunker construction by the "KAN GROO" Battalion at Phu Bai, Vietnam.



(right) On the job construction companies of 133 raise a radar tower at Fire Base Birmingham, Vietnam.

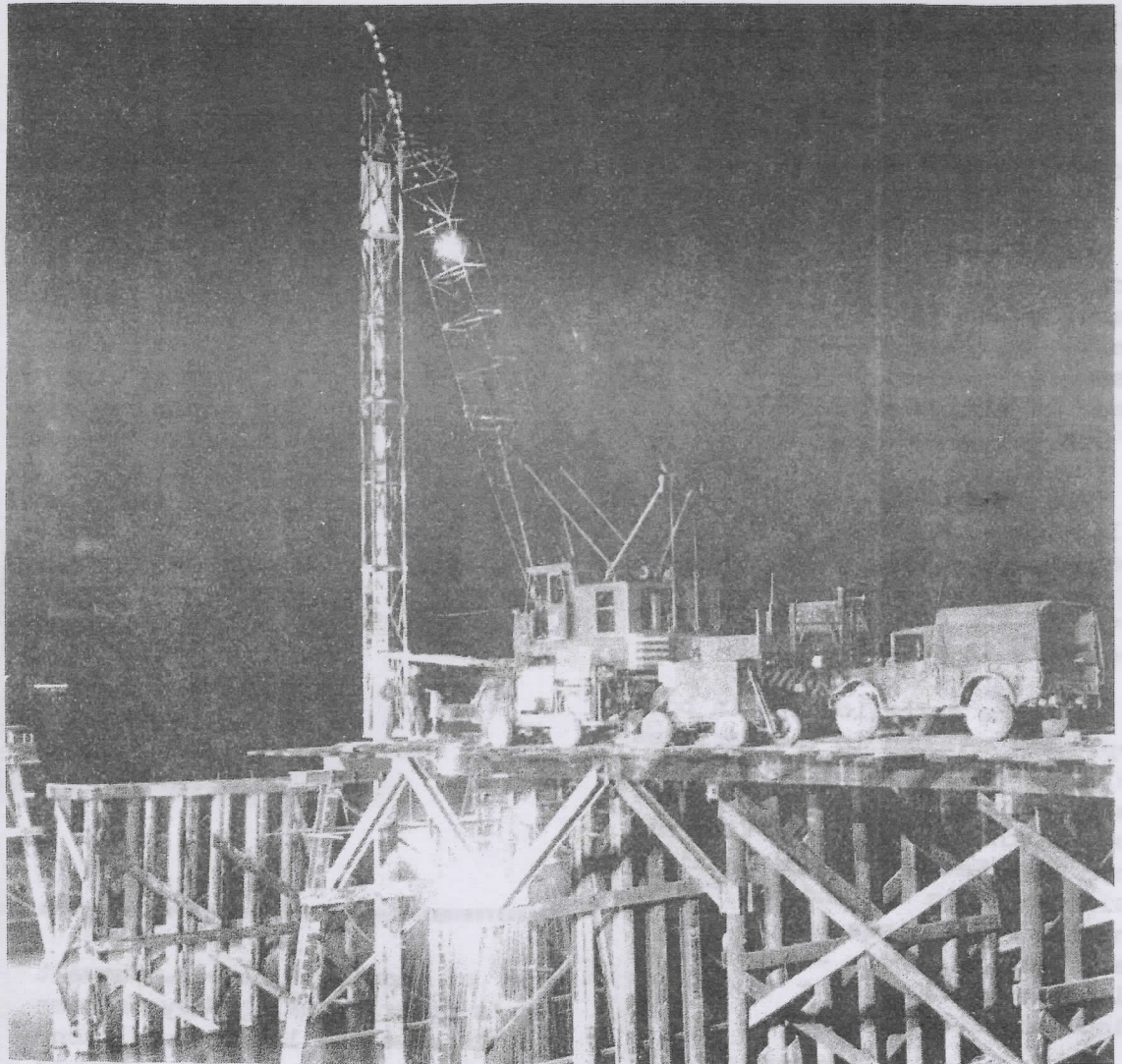


The schedule required that the job be accomplished so that the field would be closed to traffic for only 12 nighttime hours and that it would be available for emergencies anytime. MCB 133 was able to comply with all requirements completing the monumental task in just 50 hours and 55 minutes.

The battalion's third Vietnam deployment was to Camp Wilkinson, part of the Camp Eagle complex about six miles southeast of Hue, the country's ancient imperial capitol. One of the major projects was the reconstruction of the 268 foot center span of the main highway bridge at Hue, badly damaged during the 1968 Tet Offensive. The most extensive project undertaken by the Kan Groo Battalion was the upgrading and maintenance of some 70 miles of paved highway. They were also tasked with extending 95 culverts and repairing dozens of bridges.

With the third Vietnam deployment coming to a close in the typical "Kan Groo" "Can Do" spirit, MCB 133 returned home to Gulfport, Miss., for well earned rest and relaxation, visits with their loved ones... and to refurbish and retrain for their next deployment...

During it's history NMCB 133 has earned a Navy Unit Commenda-



tion for her action during the invasion of Iwo Jima in 1945, a Navy Unit Commendation on her first post-war deployment to Da

Nang, Vietnam in 1967, and Navy Unit Commendations for her Seabee Teams, 13301 and 13302, serving in Vietnam during 1968.

June 1970 - March 1971

NMCCB 133, Around the World...

a deployment of 'firsts'...

"The sun never sets on 133..." became a popular and commonly heard phrase throughout Mobile Construction Battalion 133, as "Kan Groo" spread her arms more than halfway around the world in a "Can Do" effort.

From the Azore Islands in the Atlantic, to the Republic of Vietnam, MCB 133 showed herself to be an integral part of all five of the Navy's active Seabee regiments in between.

With the battalion's main body deployed on Guam in the Marianas Islands, major construction details were also assigned at Bien Hoa in the Republic of Vietnam, Ohau and Kauai, in the Hawaiian Islands; Subic Bay and San Miguel in the Philippines and NAS Miramar, Calif. Her Seabees were also assigned in the Azore and Aleutian Island chains.

This was a deployment of "firsts." Most noteworthy of these firsts, was the construction of the Navy's first permanent mobile home park at NAS Miramar, Calif., for use by Navy personnel.

This project carried with it the mark of the "Z" as MCB 133's "Detail Koala." became a part of



one of Admiral Elmo R. Zumwalt Jr.'s programs using Navy Seabees to improve the living conditions and environment of the Navy's men and women.

"Detail Kangaroo" was detached to the Bien Hoa Army Base, in the Republic of Vietnam. Their main mission was to coordinate their activities with personnel of MCB 5 in the construction of a Seabee base camp and to provide con-

struction skills in the building of 700 living facilities in Thu Duc for Families of Vietnamese Navy and Marine Corps personnel.

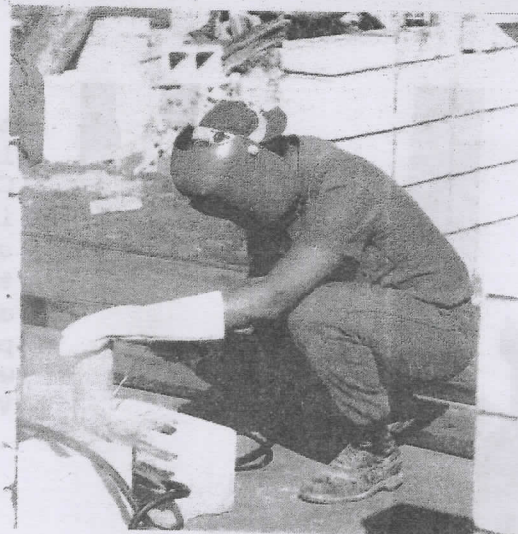
Meanwhile, "Detail Wallaby" in the Philippines, was tasked with the construction of a walk-in cold storage bank for the Naval Supply Depot, at Subic Bay. This cold storage bank with its water, lighting and other facilities along with 8,000 square yards of

aspnault paving surrounding the complex involved more than 3,000 manhours of labor. Four members of "Detail Wallaby" were detached to San Miguel to assist and supervise in one of the Navy's first "Self-Help" programs at the Naval Communication Station located there.

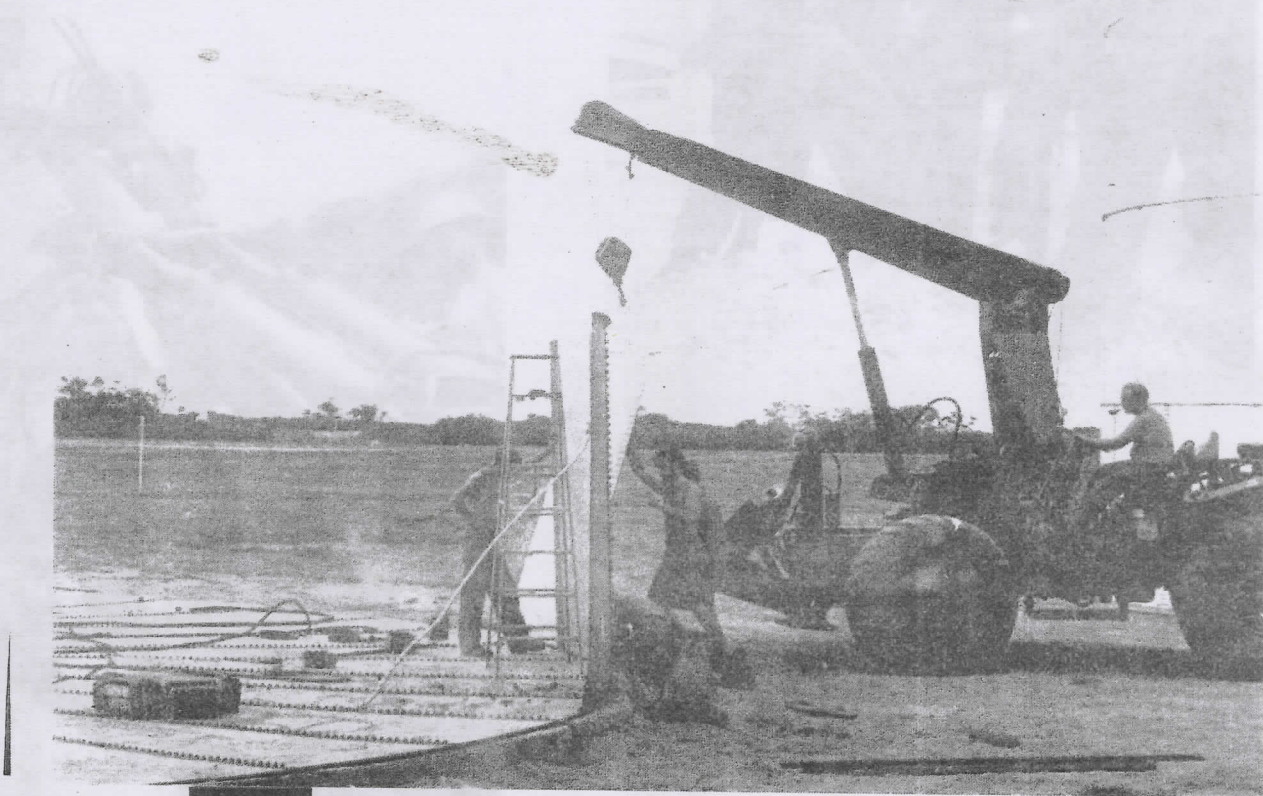
"Detail Kiwi's" mission called for the construction of recreational and welfare type projects for various Navy and Marine Corp activites. The work varied from new construction to the remodeling of present facilities. These included: the Makalapa Tennis Court lighting, golf course residence, Sub Base Pool Hall, extensive renovations at CBPAC Headquarters and roadway, parking lot and hillside improvements for Pacific Command Headquarters, all on the island of Ohau. Meanwhile on the island of Kauai, "Detail Kiwi" was completing work on an outdoor theater, two athletic courts, guest cottage renovation, EM Club additions, a water main into the base, two water storage tanks and seven Butler buildings.

Seabee Team 13305 was located in Chau Phu City, in the Chau Doc Province of Vietnam. They participated in a variety of projects such as: the Chieu Hoi Cong for repatriating of Viet Cong, construction of a warehouse at Binh My and repair of present roads and bridges.

(right) A sign of professional construction with the "KAN GROO" Battalion on the island of Guam.



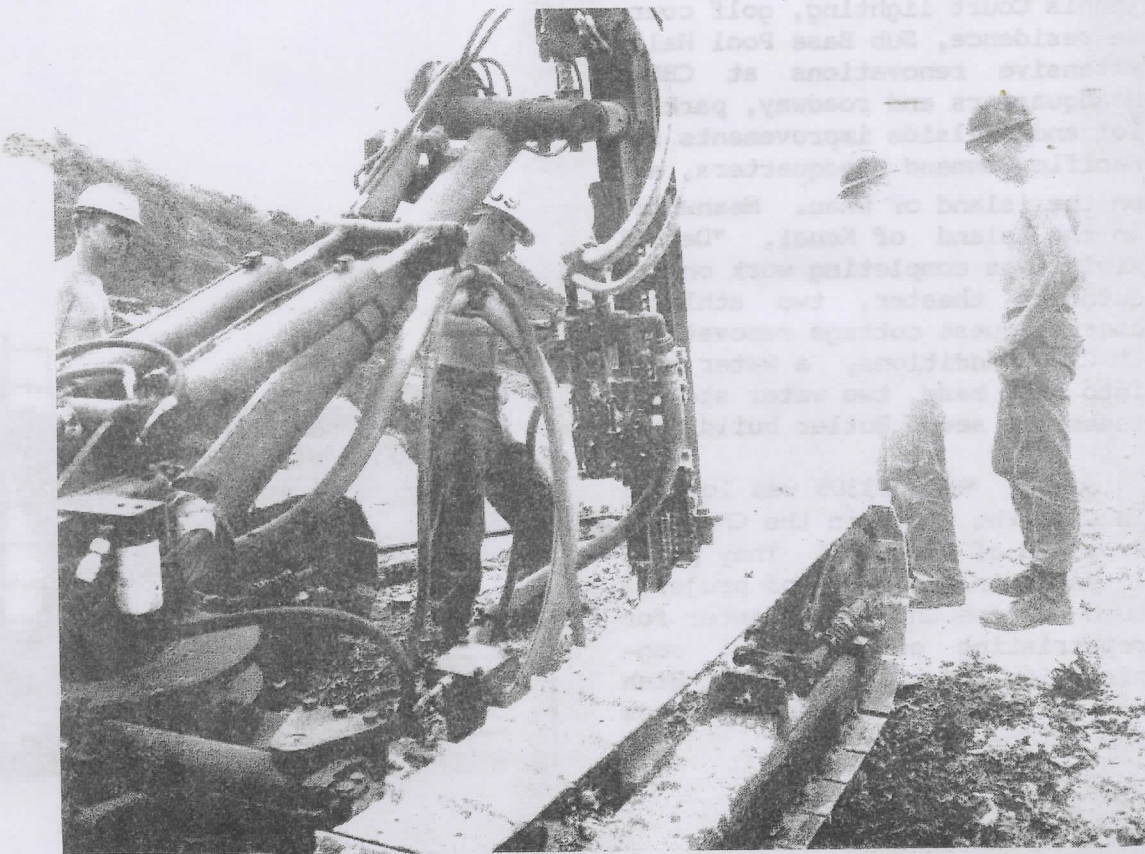
(below) Detail Kiwi went to work building a 10,000 barrel capacity bolted steel tank on the island of Kauai, in the Hawaiian Islands.





Seabee Team 13306 found itself tasked with the project of training South Vietnamese of Rach Gia City in the Kien Giang Province in Vietnam. The training consisted of modern construction techniques and involved assistance and supervision in the completion of several projects that will benefit all of the people of Vietnam.

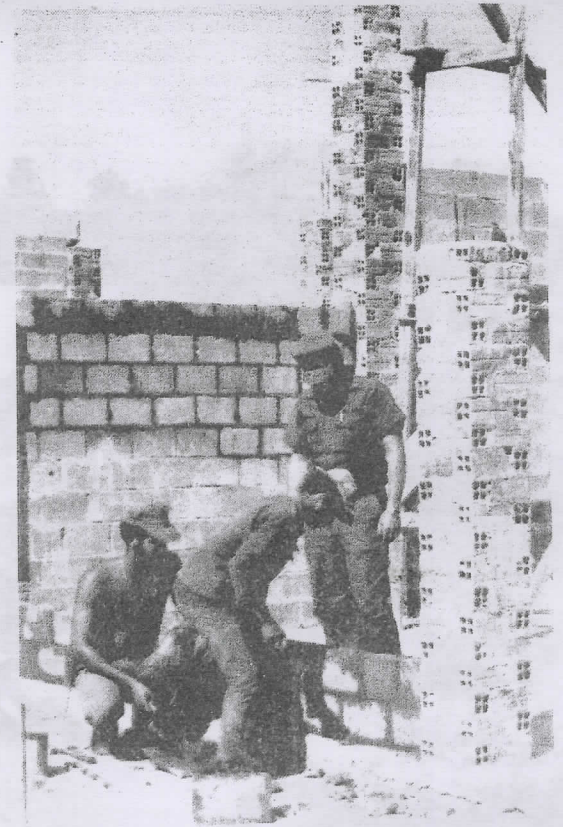
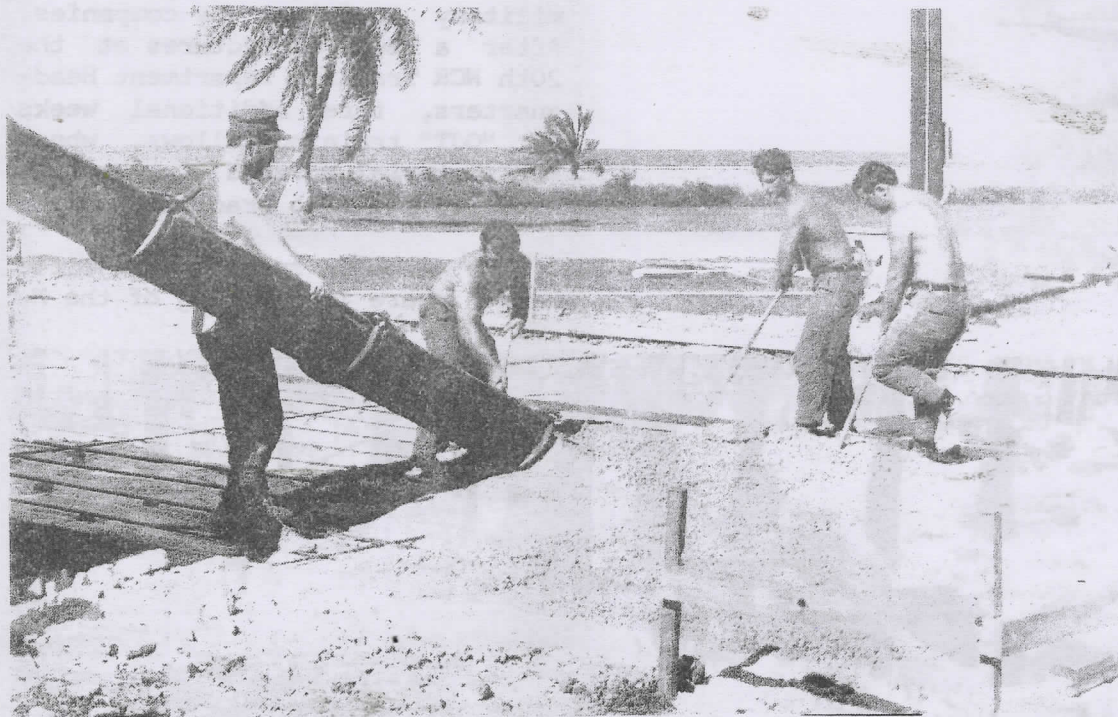
Seabee Team 13307 did most of its operating in Phu Vinh in the Republic of Vietnam. During their tour they completed two bridges, one road, a high school library and the construction of a generator shack, along with several other small projects. They also began several other projects that were left to be completed by their relief Seabee team.



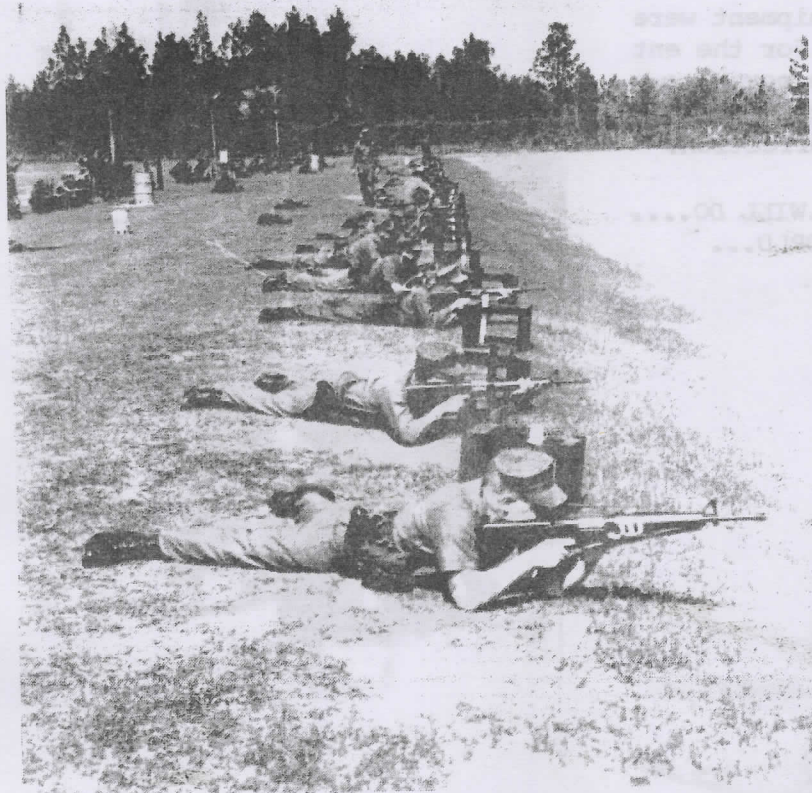
While Seabee Teams and Details were working around the globe the main body on Guam took on one of the largest peacetime construction jobs ever undertaken. The project was the building of a 1,500-man temporary Seabee Camp on the 125-acre site. The equipment operators were the main element on Guam. Each man met his job with the "Can Do" spirit that makes our battalion a successful

first. The professionalism of each was displayed each day in the tedious grind to move earth from one spot to another. Our giant earth moving equipment were pushed 10 hours a day for the entire deployment in the never ending struggle to landscape the job site to a degree of perfection.

MCB 133...CAN DO...WILL DO....
DID DO...AROUND THE WORLD...



Homeport: Leave, Training, or, MOUNTING OUT...



The homeport period for MCB 133 is a time for reunions with loved ones, well-earned leave periods, but most of all...a time for putting together the lessons learned during the last deployment in preparation for the next...

With the too brief pleasures of leaves behind us, the serious business of military and technical training begins.

The Battalion will go through military training, by companies. After a week of lectures at the 20th NCR Training Department Headquarters, three additional weeks of "OJT" training follows, where the material covered in the lectures is put into practice.

One week is spent on the rifle range where live firing of the M-



16 and/or .45 cal. pistol occurs and each man fires for qualification with his assigned weapon.

One week is spent on the finer points of defensive warfare. An endurance course sharpens the eye for trip flares and booby traps as well as acquainting the trainee with the niceties of swamp wading. Scavenger hunts both day and night serve to familiarize Seabees with a means of going places without becoming lost. The grand finale, however, is an all night defense perimeter exercise which teaches alertness, teamwork and confidence in Seabee defensive tactics.

The fourth week of training will be a field exercise for the entire battalion. After a tactical march into the designated area, a defensive perimeter is established and the battalion undertakes the job of erecting a base camp. During the week, the Seabee lives in tents and foxholes and eats C rations. A special group of well trained Seabees, dressed as guerillas, aggresses the battalion day and night. The guerillas employ tactics that the enemy might use. By the end of the week, the Seabees of MCB 133 will be militarily ready for the upcoming deployment.

For two weeks during the training period, the heavy weapons platoons will train at Camp Lejeune, North Carolina. This training in-



cludes the M-60 machine gun, M-79 grenade launcher, 3.5 rocket launcher and the 106 recoilless rifle which are too large for the local facilities.

Another main aspect of the homeport period is the technical schools. All these schools offer specialized training for a particular skill, construction safety, contingency, advanced base construction and disaster recovery. Special schools are also included for the fleet rates.

But, when all is said and done, the homeport period all boils down to one thing...preparing once again to...MOUNT OUT...



Homeport Telephone Numbers

CB CENTER

CB Center.....	864-6220
Autovon Operator Assistance.....	353-4011
Medical (CBC, Dispensary).....	601
Police (CBC, Gate #1).....	221
Fire (CBC,).....	333
Base Locator.....	286
Chaplain.....	454-5
Commissioned Officer's Mess (Rhodes Hall)...	616-6
Chief Petty Officer's Mess.....	245
Family Services Center.....	481-2
Legal Office.....	626
Red Cross.....	483

BATTALION NUMBERS

Commanding Officer.....	375, 376
Executive Officer.....	375, 376
Administration.....	384, 385
Personnel.....	381, 382, 383
Quarter Deck.....	387
Battalion Master Chief.....	379
Master At Arms.....	387
Chaplain.....	388
Public Affairs Office.....	264
Barracks 116 (Alfa Co.).....	432
Barracks 115 (Bravo-Headquarters Co.).....	391
Barracks 66 (Charlie-Delta Co.).....	474

Navy Exchange Facilities

RETAIL STORE

Monday-Friday	0900-1630
Saturday	0900-1300
Sunday and Holidays	Closed

BUILDING 98

CAFETERIA

Monday-Friday	0600-1800
Saturday	0700-1300
Sunday and Holidays	0700-1300

Building 98

QUICK SHOP

Monday-Friday	0900-1630
Closed for lunch	1230-1315
Saturday	0900-1400
Sunday and Holidays	0900-1400

BUILDING 283

E. M. CLUB

Monday-Thursday	1100-2200
Friday	1100-2200
Saturday	1200-2400
Sunday and Holidays	1200-2400

BUILDING 98

TAILOR SHOP

Monday-Friday	0900-1630
Saturday	0900-1300
Sunday and Holidays	Closed

BUILDING 56

BARBER SHOP

Monday-Friday	0800-1630
Saturday	0900-1300
Sunday and Holidays	Closed

BUILDING 57

LAUNDRY BUILDING 56
 Monday-Friday 0900-1630
 Closed for lunch 1230-1315
 Saturday 0900-1300
 Sunday and Holidays Closed

SERVICE STATION BUILDING 283
 Monday-Friday 0700-1630
 Saturday 0900-1400
 Sunday and Holidays 0900-1400

PACKAGE STORE BUILDING 98
 Monday-Friday 1100-1630
 Saturday 0900-1300
 Sunday and Holidays Closed

PORTRAIT STUDIO BUILDING 98
 Monday-Friday 0900-1630
 Saturday 0900-1300
 Sunday and Holidays Closed

Base Facilities

AUTO HOBBY SHOP BUILDING 141
 Monday Closed
 Tuesday-Friday 1200-2000
 Saturday 1000-1800
 Sunday Closed

ELECTRONICS HOBBY SHOP BUILDING 50
 Tuesday-Friday 0800-2000
 Saturday 1200-1800
 Sunday and Monday Closed

WOODWORKING HOBBY SHOP BUILDING 52
 Tuesday-Friday 1400-2200
 Saturday 1200-1800
 Sunday and Monday Closed

CERAMICS HOBBY SHOP BUILDING 50
 Tuesday-Friday 1100-2100
 Saturday 0900-1800
 Sunday Closed

BOWLING ALLEY BUILDING 174
 Monday-Thursday 0900-2300
 Friday-Saturday 0900-2400
 Sunday 1200-2300

GEAR LOCKER BUILDING 97B
 Monday-Friday 0930-1230
 1300-1630

Golf, tennis, archery and ball equipment plus fishing camping and picnic gear can be checked at Building 97B.

STABLES
 Tuesday-Sunday 0900-1800
 Closed Monday

GREETING LOUNGE BUILDING 99
 Monday-Saturday 1300-2000
 Sunday 1400-1800

GYMNASTICS

BUILDING 145

Monday
 Tuesday-Friday
 Saturday
 Sunday

1400-2200
 1000-2200
 1200-2200
 1300-2200

POOL HALL

BUILDING 99

Monday-Saturday
 Sunday

1300-2000
 1400-1800

CBC RECREATIONAL PARK - Make reservations for picnics and parties by calling Ext. 538

LIBRARY

BUILDING 94

Monday-Friday
 Tuesday-Thursday
 Saturday
 Sunday and Holidays

0730-1700
 1815-2030
 0800-1700
 Closed

SWIMMING POOL

Monday-Friday
 Saturday and Sunday

1200-2000
 0900-2000

FAMILY SERVICES CENTER

The Family Services Center in building 54, is an information and referral service to assist with your needs and welfare. Information is available but not limited to dependent's medical care and local medical facilities, wives' clubs and other military clubs, credit union, personal financial management, Navy Relief, Red Cross, Churches, Commissaries, Exchange and other base facilities, A Notary Public is available at no cost. Family Service Center maintains a reference library of

BOAT SHOP

Small Boat Harbor, Gulfport

Wednesday-Sunday
 Monday-Tuesday

0700-1500
 Closed

Reservations made at 1200 every Wednesday. Motors boats and camping trailers are available on first come, first serve basis. Reservations for Deep Sea Fishing boat must be made two weeks in advance with Special Services Officer.

SEABEE THEATER

BUILDING 94

Monday-Sunday

Show time 1900, doors open 1 hour prior.

HANCOCK BANK

BUILDING 53

Monday-Friday
 Reopens every Friday from Saturday and Sunday

0900-1330
 1430-1600
 Closed

The hours of operation and the location of the facilities listed above are the most recent available and are subject to change at any time.

all Naval activities stateside and overseas. Shipwreck Kits are available through this office. Household goods are available that can be used when yours are delayed or lost in shipment. Family Services Center will be happy to assist you at any time, Monday through Friday from 0700-1530.

HOUSING OFFICE

All personnel regardless of family status must clear through the Housing Office Building 54, as part of their check-in procedure and prior to mak-

ing any arrangements for lease or rental of living quarters off base. Family housing at CBC, Gulfport, consists of seven units of officers quarters located on base, and 200 leased units for officers O-3 and below and enlisted E-9 through E-4 (with 4 years service), dispersed within a ten-mile radius of the base. These units are unfurnished except for stove and refrigerator and the Navy pays the rent and utilities in return for the member's BAQ. Assignment and management of these quarters is substantially the same as for public quarters located on base. Assignment is for the duration of tour of duty at CBC, Gulfport, regardless of deployment schedules. Occupying leased quarters provides members with a number of advantages over renting on the open market:

1. Rent is paid by the Navy.
2. All utilities (except telephone) are paid by the Navy.
3. Housing office handles problems arising during occupancy requiring contact with the owner, relieving deployed members of worry about family's welfare.
4. Local move to leased quarters is at Navy expense.
5. Rent plus utilities on leased quarters averages \$155.00 per month, providing members with better housing than they could afford for their BAQ.
6. Occupants of leased quarters are not subject to being forced to move due to owner's request as could happen in private rentals.

An off-base housing referral service, a part of the housing office function, provides a personalized and conveniently available service to assist military personnel of all grades moving into the Gulfport area in locating suitable off-base housing. Prior to making any private rental arrangements, personnel must check through the housing referral service.

POST OFFICE

The CBC Post Office is located in Building 53. It offers all financial postal services (money orders, stamps, etc.) with exception of mailing packages to foreign countries. The later exception does not apply to Fleet Post Office (FPO) addresses.

Finance: Monday - Thursday 1000-1300 1330-1700
Friday 0900-1630

The following is the correct mailing address for MCB-133

Name
MCB 133 Co.
FPO New York 09501

RED CROSS

The office of the Red Cross Field Director is located in Building 54. During duty hours he may be reached at extension 483. During off-duty hours please call the Base Operator. Appointment normally not necessary. Dependents are invited to give volunteer service at the Base Dispensary and at the Bi-Monthly Bloodmobile visits. Orientation and training classes are scheduled periodically during the year for women who desire to become a member of the Red Cross Volunteer service. Call the Red Cross office for the name and phone of the Volunteer Chairman.

NAVY RELIEF

The Navy Relief Society of Gulfport, is located in Building 54, Ext. 592 or 593. This branch provides financial assistance, counseling in family management and referrals to other agencies that are better equipped to assist in a particular need.

NAVY RELIEF THRIFT SHOP

The Navy Relief Thrift Shop is located in building 4 (opposite end from the Nursery). It is open on Tuesdays and Wednesdays from 0900-1500 only. This shop provides clothing and other items for sale at extremely low prices. It is open to all enlisted military personnel, officers O-3 and below and their dependents.

LEGAL OFFICE

The CBC legal department provides legal assistance to military personnel and their dependents concerning matters of federal and state civil and criminal law. Advice is given by licensed attorneys in all fields of law, including contracts, domestic relations, estates, landlord and tenant problem, real estate, taxation, lawsuits, wills and civilian arrests. This service includes the preparation of simple documents; for example, powers of attorney, bills of sale, separation agreements, etc. In addition, information on voting is available. Legal assistance does not include representation by the legal office in civilian court proceedings. Where representation by a civilian attorney is required, the legal officer will refer the client to a local attorney upon request. The legal office is located in building 39, tel. 626.

MEDICAL FACILITIES

The U.S. Naval Construction Battalion Center's dispensary occupies the east portion of building 295. Sick Calls are held from 0730 to 0830 Monday through Friday for military personnel and 0930 to 1100 and 1300 to 1430 for military dependents. The "well baby" clinic is held on Tuesdays from 1430 to 1530. Included at this hour are routine checkups, immunizations and allergy shots. Prenatal checkups are held on Thursday from 1430 to 1530 by appointment only. Emergencies will be

seen at any time.

The nearest medical support activity is the U.S. Air Force Medical Center, Keesler Air Force Base, which is approximately 15 miles from CBC. It is a modern 400 bed hospital, well equipped to handle all medical and surgical care. Those that require special treatment or special diagnostic tests are referred to the medical center at Keesler.

Navy ambulance service is provided in cases of a "bonifide emergency" for transportation to the hospital.

DENTAL FACILITIES

Dental is located in building 295. Dental spaces include three oral hygiene and preventative dentistry suites, six general dental operator rooms and one each oral surgery, prosthetic and oral diagnosis treatment rooms. All active duty and retired personnel are eligible for dental treatment. Dependents are authorized treatment only in case of emergency or as necessary in adjunct to a medical disorder.

SICK CALL 0800-1000 Monday through Saturday
.1300-1400 Monday through Friday

Routine dental examinations will be given during sick call hours.

MEDICARE PROGRAM

Secretary of the Navy Instruction 6320.8C explains in detail the Navy MEDICARE program. It is available in the administrative section of this command to review in event of questions. However, in order to better acquaint all personnel briefly on the program the following information is provided.

There are two basic programs available:

Treatment at a uniformed services medical facility.

Participation in Civilian Health and Medical program of the Uniformed Services (CHAMPUS).

Treatment at a uniformed services medical facility is free for dependents of active duty personnel and must be used if the uniformed services facility is within a 50 mile radius of the service member's home.

However, valid emergencies may require immediate treatment under the CHAMPUS program. In this case, the dependent must obtain a statement of "NONAVAILABILITY" from the nearest uniformed service facility, i.e., a U.S. Naval reserve station, a Naval station, a commandant's headquarters, etc. that is needed in order to obtain the "NONAVAILABILITY" statement is the dependents identification card.

Treatment under the CHAMPUS program is complicated. However, if you follow the below simple steps, CHAMPUS could be a valuable source of medical care.

a. DEPENDENTS OR SPONSOR should:

(1) Ensure the attending doctor is a participating member of the MEDICARE program.

(2) Insure the Pharmacist is a participating member of the MEDICARE Program.

(3) Insure the hospital or clinic is a participating member of the MEDICARE program.

(4) Obtain the address of your "Military Fiscal Agent," in SECNAVINST 6320.8C. Each state has one Military Fiscal Agent authorized to provide information and guidance of military dependent personnel in the reimbursement of their medical expenses. Therefore, this address is very important.

b. In the event all are participation members of the MEDICARE Program, then the medical treatment under CHAMPUS is a relative simple problem. The dependent should contact the Military Fiscal Agent by letter or telephone call, and indicate her desire to participate in CHAMPUS. The military Fiscal Agent will explain that particular state's rules as it pertains to forwarding vouchers for payment, etc. However, the pay of medical bills is a firmly established price and cannot be changed or altered by the Military Fiscal Agent, only the application for payment may change.

c. Active duty personnel dependents must pay the first \$25.00 of the medical bills (this includes hospitalization, doctor bills and drugs) during the fiscal year (1 July to 30 June), and the government will reimburse you 80% of anything you pay over the first \$25.00. Service members with large families may choose the \$100.00 medical care plan. This plan operates the same as the \$25.00 plan, except that all members of your family are covered.

d. Personnel must pay the first \$25.00 or \$100.00, whichever plan is chosen, each year beginning 1 July each year. However, you do not pay the \$25 or \$100 until you actually need medical treatment or some member of your family requires the treatment.

Remember, whichever plan you choose, the treatment in a Uniformed Services Medical Facility or participation in CHAMPUS, the best medical assistance available will be at your disposal.

In the event you desire to research the CHAMPUS medical plan further, do not hesitate to check out the SECNAV Instruction covering the plan.

MOUNT OUT CONTROL

The Mount Out Control Center is set up to effectively coordinate all airlifts to and from Gulfport between the user, the units providing the aircraft (Military Airlift Command, various Navy and Marine Squadrons) and the Air National Guard site at Gulfport Municipal Airport. Collateral duties of this department are to provide arrival times of aircraft to all concerned which do not conflict with or compromise the classified aspects of any particular airlift. Also deployed units normally provide information to the 20th NCR concerning serious accidents or incidents while on deployment. This information is normally not releasable to the general public until this department places a man on watch to receive calls from dependents, etc. and provides available information that can be released. This aspect of the Mount Out Control Center Mission is commonly referred to as "RUMOR CONTROL CENTER".

VEHICLE PARKING ON CBC WHILE DEPLOYED

A parking area located in open storage area 17 (Lee Avenue) has been reserved for parking while the Battalion is deployed. The Security Officer

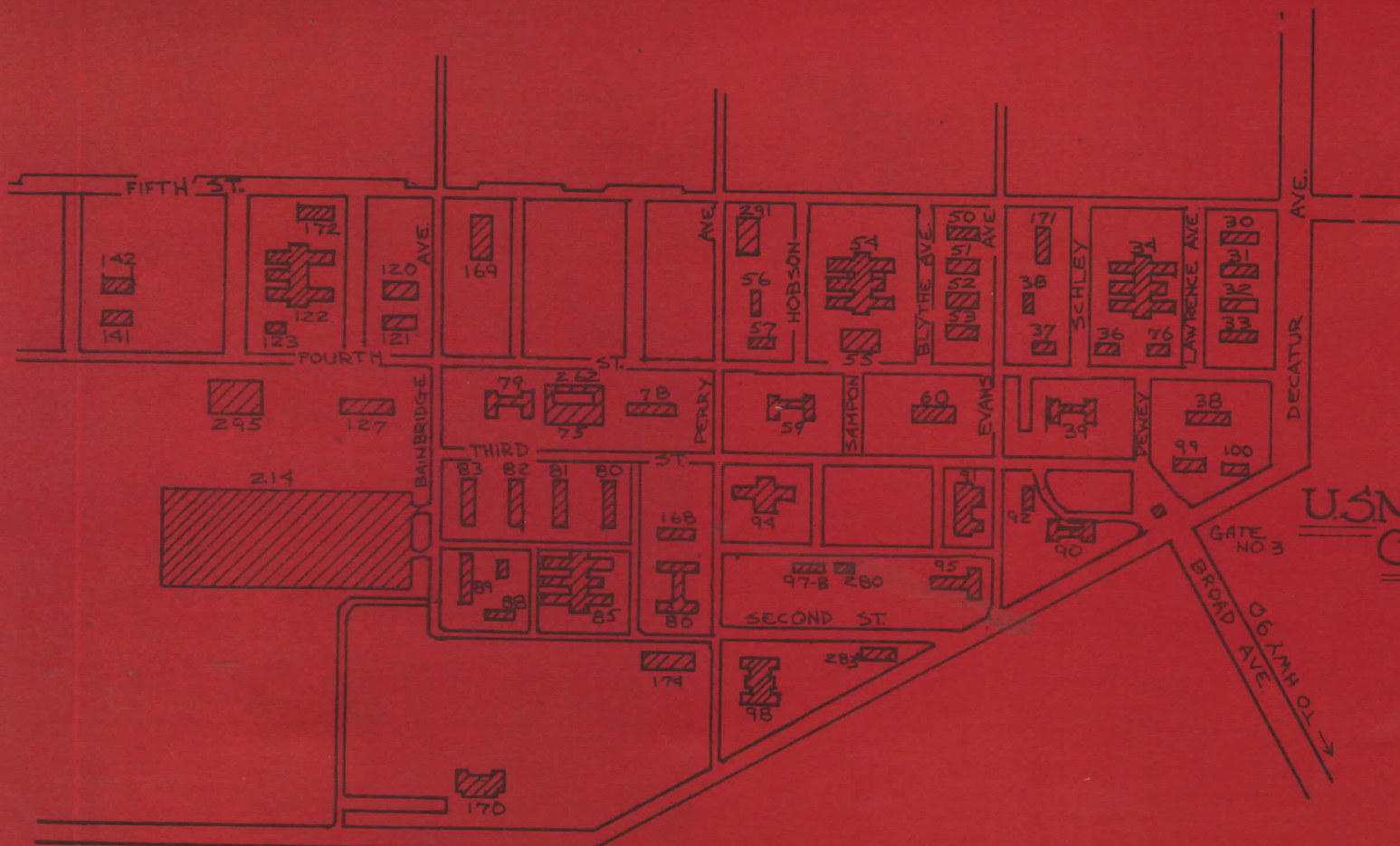
will designate and control all parking. Vehicles with Security Police 24 hours prior to the desired parking date. Vehicles will be logged in by Security Police at Gate 1. The car will be visually inspected and locked in the presence of a guard who will note any discrepancies in the condition of the vehicle in the log. All gear will be stowed in the trunk. No one but vehicle owners will be permitted in the area except with notarized written permission of the owner and prior notification of the Security Department by the owner. No repair work is permitted in the area, however, owners or designated agents will be permitted to perform required storage mechanical work such as blocking and unblocking of vehicle, removal and replacement of wheels, removal or disconnecting and replacement battery, draining of radiator and crankcase and refilling of same. This work will be performed in the presence of a Security Guard. Vehicles may be moved to other areas (including Nonsecure areas) in cases of emergency or expediency without liability or accountability on the part of Naval Construction Battalion Center, Gulfport.

The Construction Battalion Center will not be held responsible for theft or vandalism to vehicles parked in this area or other designated areas.

miscellaneous numbers

GEAR LOCKER.....	EXT.	362
STABLES.....	EXT.	212
GREETING LOUNGE.....	EXT.	551
GYMNASTICS.....	EXT.	668
POOL HALL.....	EXT.	551
AUTO HOBBY SHOP.....	EXT.	559
CERAMICS HOBBY SHOP.....	EXT.	517
ELECTRONICS HOBBY SHOP.....	EXT.	519
WOODWORKING HOBBY SHOP.....	EXT.	518
BOAT SHOP.....	EXT.	
BOAT SHOP.....		863-7621
BOWLING ALLEY.....	EXT.	739
HANCOCK BANK.....	EXT.	394

SEABEE THEATER.....	EXT.	489
RETAIL STORE.....	EXT.	439
CAFETERIA.....		864-5530
QUICK SHOP.....		864-5527
E. M. CLUB.....	EXT.	396
TAILOR SHOP.....	EXT.	354
BARBER SHOP.....		864-5457
LAUNDRY.....		863-5078
SERVICE STATION.....		864-5527
PACKAGE STORE.....	EXT.	476
PORTRAIT STUDIO.....	EXT.	661
LIBRARY.....	EXT.	409
SWIMMING POOL.....	EXT.	322



U.S.N.
C.B.C.

Armory	291	Commissary	7	Grinder	214	Pool Hall	34
Auto Hobby Shop	141	Credit Union	76	Gymnasium	145	Post Office	53
Bank	53	CTU Headquarters	85	Housing Office S.E.	54	Quick Shop	283
Barber Shop	57	Disbursing	60	JAMTO	60	Red Cross	54
Battalion Hq.	59	Dispensary/Dental Clinic	295	Laundry	56	Security	37
Battalion Hq.	79	Dry Cleaning	56	Legal	60	Special Services	51
Bowling Alley	174	Educational Services	32	Library	94	Swimming Pool	262
Cafeteria	98	Electronics Hobby Shop	51	Mess Hall	122	Theater	94
CBC O.O.D.	60	E. M. Club Temp.	171	Military Admin.	60	Twentieth NCR. Hq.	54
Ceramic Shop	50	Family Services S.E.	54	Navy Exchange	98	Woodworking Hobby Shop	52
Chapel	169	Gas Station	283	Navy Relief S.E.	54	Washeteria	57
Clothing Store	62	Gear Locker	143	Photo Lab.	280		

KEEP KANGROO



COUNTRY KEEP



a
public affairs
publication